



STATE TRANSPORTATION BOARD

JULY 2025 COMMITTEE MEETINGS

July 16, 2025



STATE TRANSPORTATION BOARD

Administrative Committee

July 16, 2025



Building Georgia

A Workforce Partnership

Georgia Department of Transportation

July 16, 2025



Atlanta Regional Commission

Vision

ONE **great** REGION

Mission

Foster thriving communities for all within the Atlanta region through collaborative, data-informed planning and investments.

Values

Excellence | **Integrity** | **Equity**

Goals



Healthy, safe, livable communities in the Atlanta Metro area.



Strategic investments in people, infrastructure, mobility, and preserving natural resources.



Regional services delivered with **operational excellence** and **efficiency**.



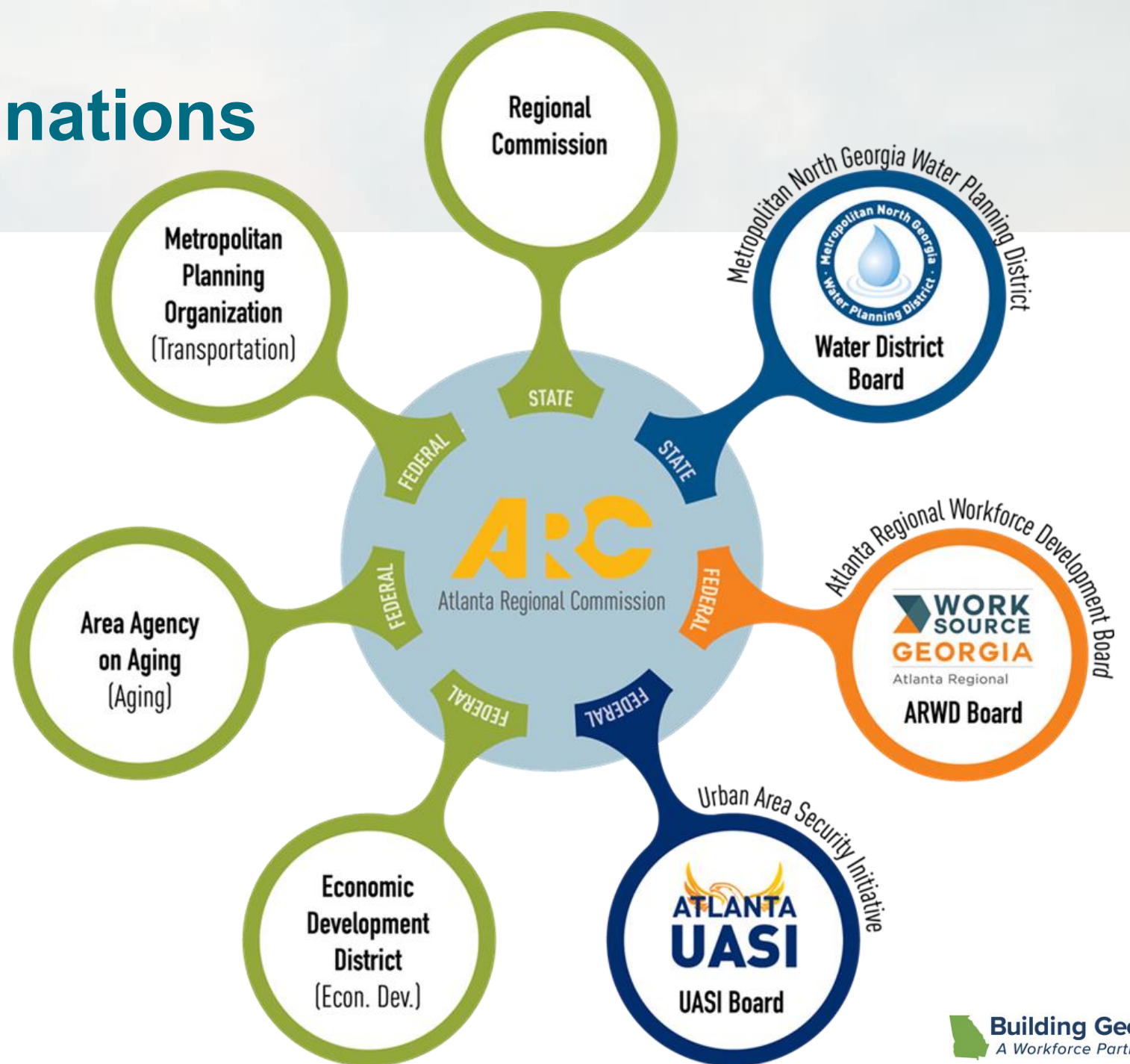
Diverse stakeholders engage and take a regional approach to solve local issues.



A competitive economy that is inclusive, innovative, and resilient.

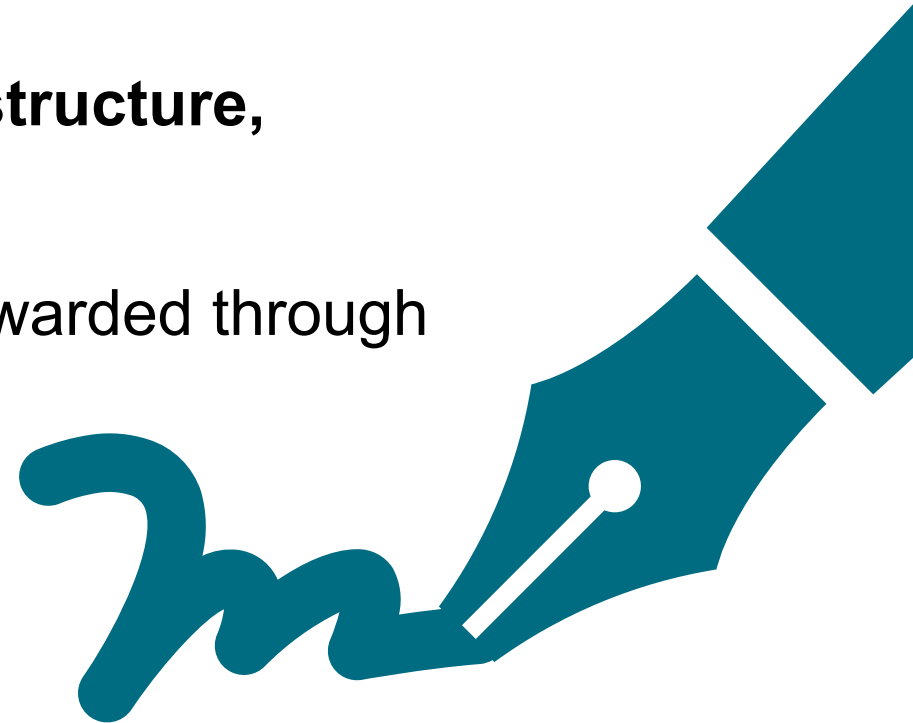
ARC Legal Designations

- ARC predecessor agency created in 1947
- First publicly funded multi-county planning agency in the country
- ARC responsibilities are derived from federal and state authorizations



Infrastructure Investment & Jobs Act (IIJA)

- Signed into law (PL 117-58) on November 15, 2021
- Covers five fiscal years (FY 2022-2026)
- \$1.2 trillion authorized for a wide variety of infrastructure, including about half for transportation**
- Roughly 400 programs, about half of which will be awarded through nationwide competitive processes



Federal Implementation Priority: Workforce Development

Investing funds from transportation programs in workforce development is allowed by the IIJA

The IIJA expands the allowable uses of funds to allow for engagement with workforce development boards and for activities around addressing workforce gaps.

Investments from transportation programs can be aligned with existing workforce development programs

Optional Human Capital Plans can help determine immediate and long-term workforce needs and align workers with future transportation and public infrastructure investments.

Identifying which competitive or formula programs should make investments in workforce development

Example programs that are eligible include the National Highway Performance Program; the Surface Transportation Block Grant Program; and the Congestion Mitigation and Air Quality Improvement Program

Building Georgia Initiative

A Workforce Partnership

Purpose

The purpose of Building Georgia is to foster collaboration across the state between government agencies, the private sector, and the workforce training community to “close the gap” between the current levels of workforce employment in the infrastructure construction sector and what will be needed for Georgia to successfully take advantage of funding provided in the Infrastructure Investment & Jobs Act (IIJA)

Need

Our analysis has identified an approximate “gap” of **136,000** infrastructure construction job openings across the state of Georgia over the 5-year lifespan of the IIJA.

Building Georgia Initiative

A Workforce Partnership

Approach

Objective 1

Train Labor Based on Industry Need Assessments

- Train 100 people in skilled trades for needs identified by our local infrastructure employer partners
- Establish a pool of employers that will guarantee interviews for all trainees that complete the program
- Provide supportive services for participants (e.g., for childcare, transportation, stipend)

Objective 2

Match Employers with Job Seekers

- Develop a Building Georgia website to serve as common landing page for job seekers, training providers, and employers
- Link labor exchange system to website
- Create a branding and outreach campaign for statewide implementation

Objective 3

Reframe and Promote Skilled Trades Earlier

- Prepare career pathways for skilled trades and related infrastructure jobs
- Review existing programs (e.g. CTAE programs) for synergies
- Prepare age-appropriate messaging for junior and high school
- Explore implementation options in schools and supportive programs

Objective 4

Identify Funding to Support Long Term Efforts

- Develop and monitor metrics
- Prepare budget needs for ongoing program implementation
- Seek funding options including federal and state allocations, philanthropic and private sector funds, and “pay to play” options.

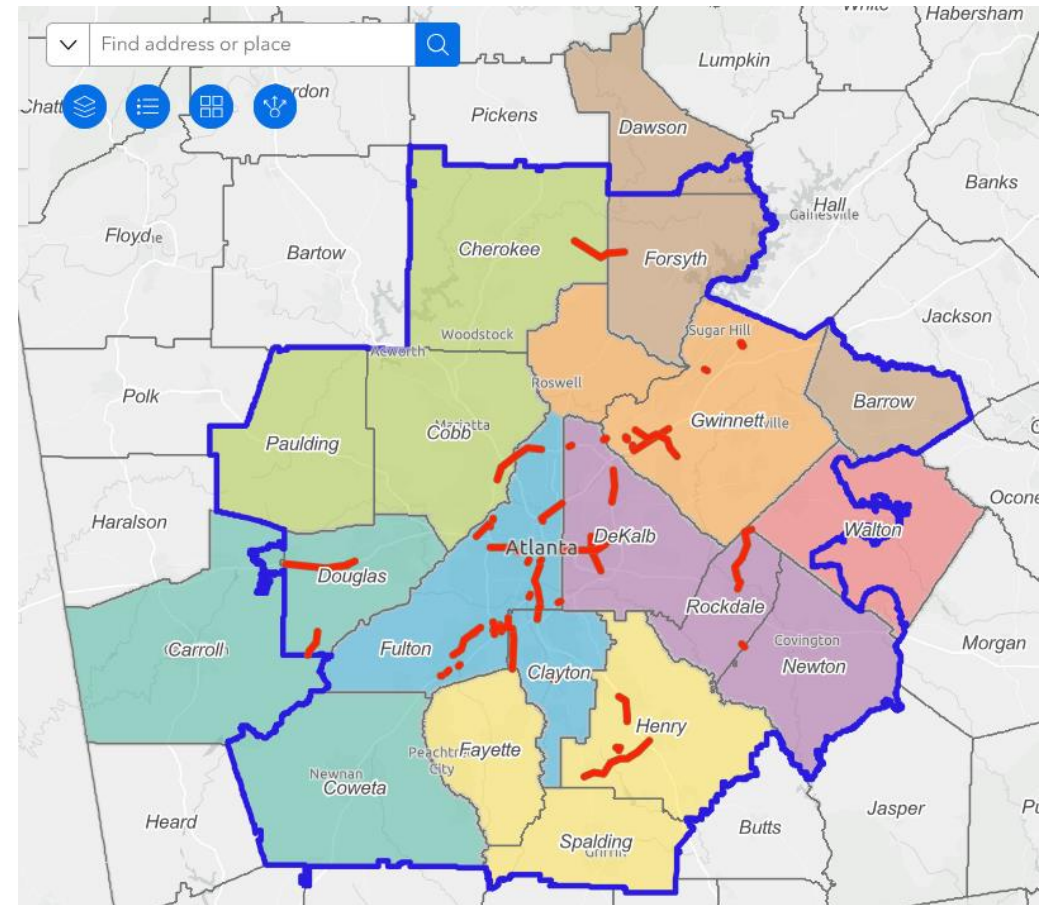
Building Georgia Initiative

A Workforce Partnership

Objective 1: Pilot Training Program

- \$1 million dedicated for training at least 100 people by December 2026
- Focus on surface transportation projects in the Atlanta MPO (18 county area)
- Stipends available for people actively in training
- Training programs led by technical colleges based on employer needs
- Establish a core group of employers to guide training development and interview/hire training graduates
- Provide outreach and recruitment activities to support local hire practices

Surface Transportation Projects in Metro Atlanta



Contractors Meeting Overview – April 25, 2025

42 people in attendance

- 12 representatives from 9 employers
- Agencies included ARC, GDOT, FHWA, and TCSG
- Gwinnett Tech and Atlanta Tech
- WorkSource Atlanta, Atlanta Regional, and Fulton
- CareerRise, ACEC, and GHCA

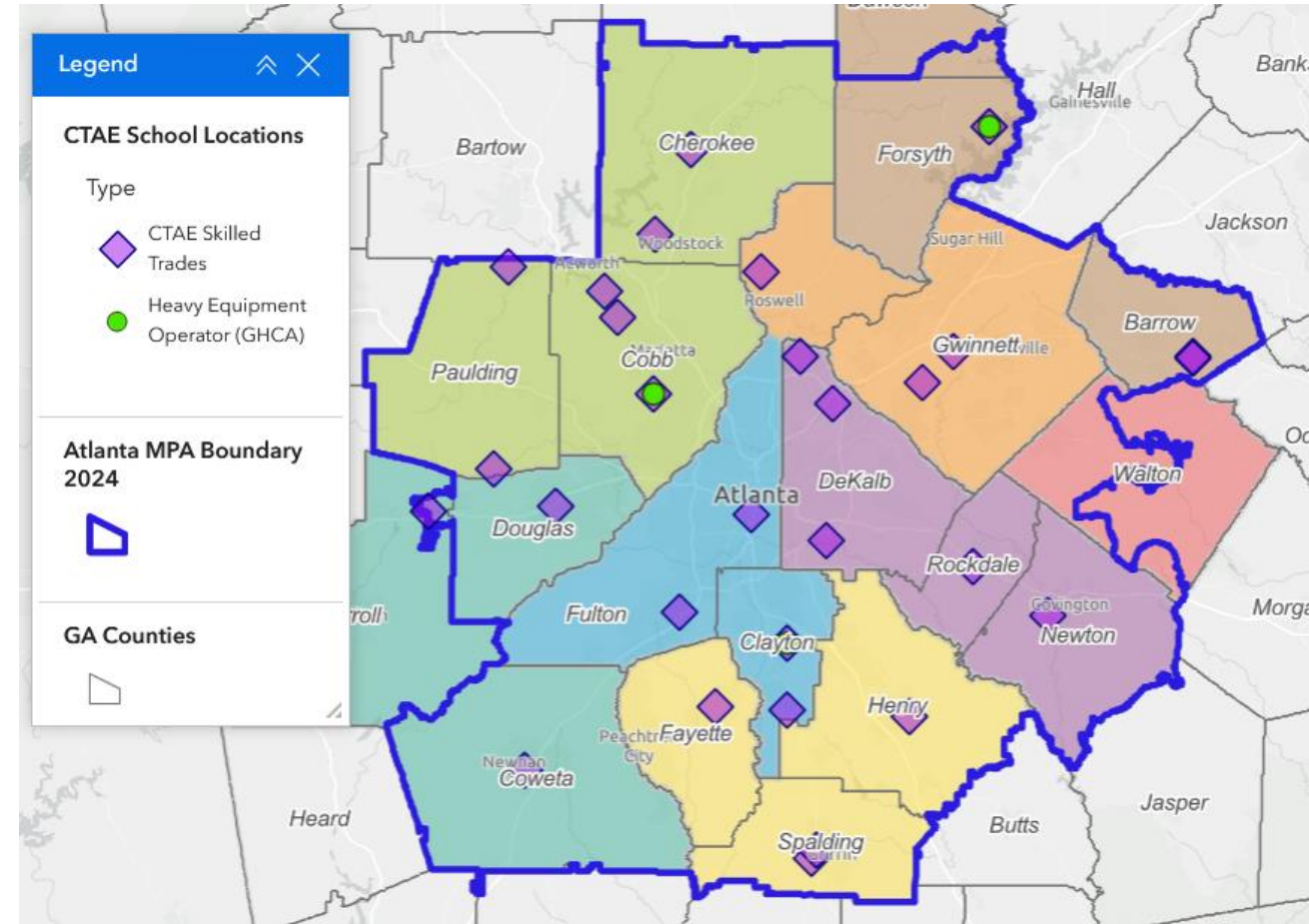


Building Georgia Initiative

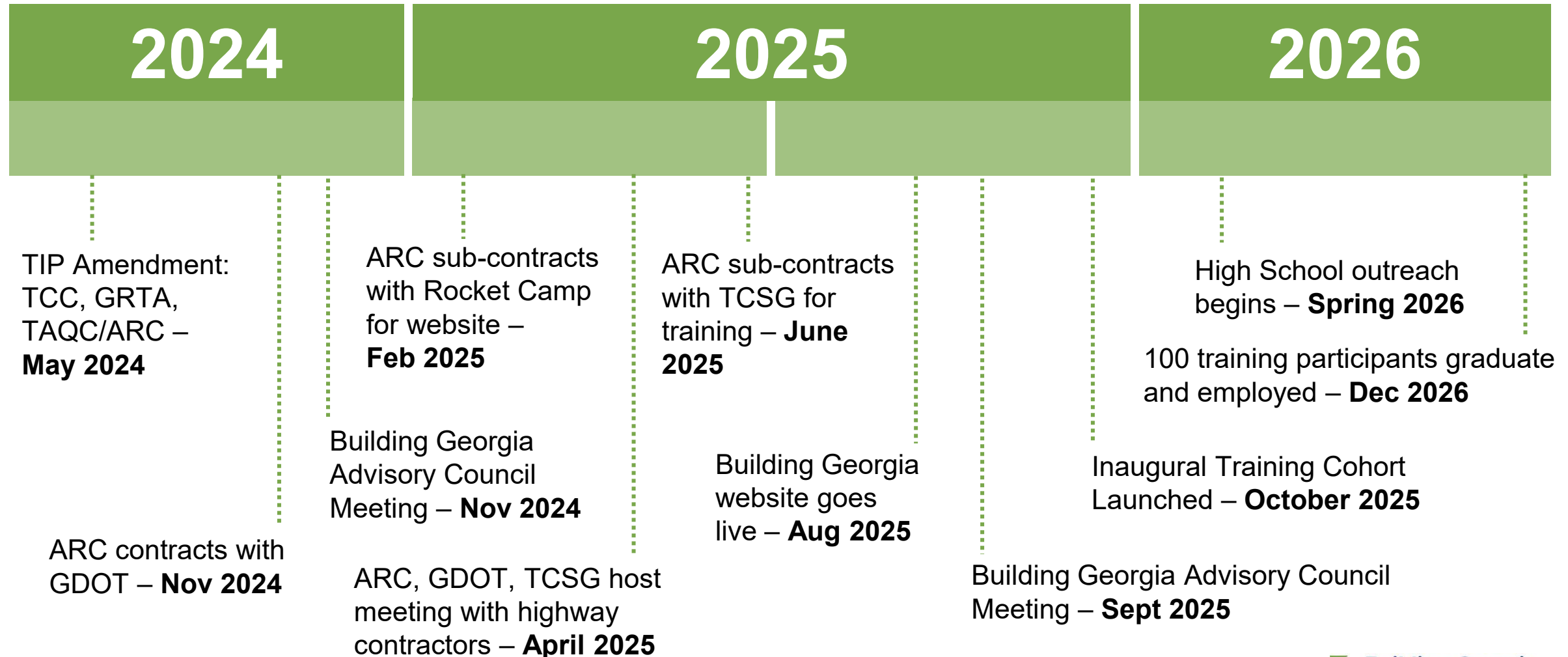
A Workforce Partnership

Objective 3: Promote Skilled Trades Earlier

- Assess existing programs
 - CTAE skilled trades programs
 - GHCA heavy equipment simulators
- Review allied initiatives
 - Be Pro Be Proud
 - Skills USA
 - Path to Pro
- Prepare career pathway documents for youth and parents
- Coordinate with K-12 schools to distribute materials and establish additional training programs



Milestones



Time is Right for a Building Georgia Partnership

- IJA provides an influx of infrastructure funding to Georgia
- There is a deficit of skilled trade workers in Georgia currently
- Additional infrastructure projects and anticipated retirements will exacerbate the skilled trade worker deficit
- Low unemployment rates across the state make it harder for employers to find qualified workers
- Skilled trades offers quality careers
- Workforce funding coming to Georgia is on a downward trend
- IJA expanded 504(e) eligibility for workforce activities, funded at 100%
- FHWA's Highway Construction Workforce Partnership (HCWP) supports innovative approaches for infrastructure workforce initiatives
www.fhwa.dot.gov/innovativeprograms/centers/workforce_dev/hcwp/



STATE TRANSPORTATION BOARD

Equal Access Committee

July 16, 2025



GDOT DBE Goal Attainment-July 2025

Equal Access Committee Update



Kimberly A. King
EEO Administrator
July 16, 2025





**Per federal regulation at
49 CFR 26.45, GDOT has
set an overall Agency
DBE Goal**

11%

6% race neutral

5% race conscious

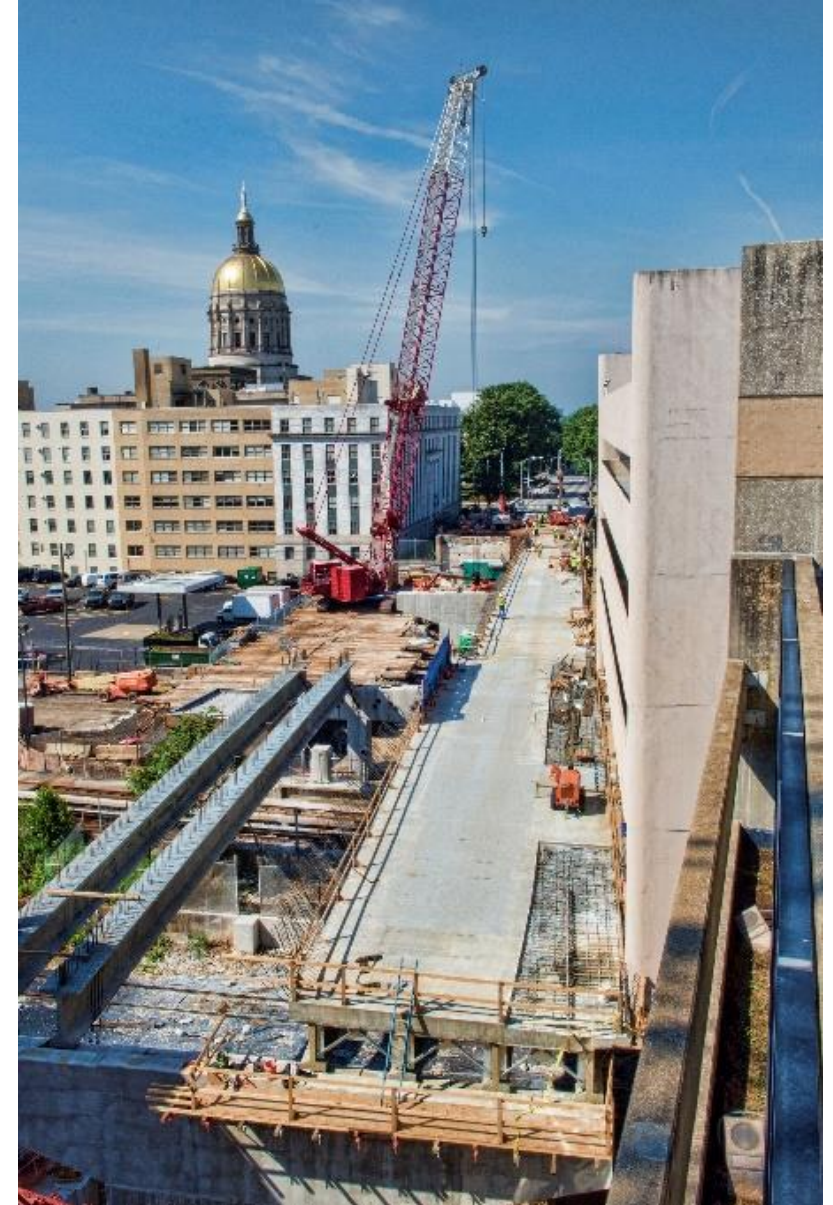


Project Goal Setting

The overall Agency goal differs from the project specific goals that are set on individual projects at the time of letting.

Your overall goal must be based on demonstrable evidence of the availability of ready, willing and able DBEs relative to all businesses ready, willing and able to participate on your DOT-assisted contracts (hereafter, the “relative availability of DBEs”). The goal must reflect your determination of the level of DBE participation you would expect absent the effects of discrimination. You cannot simply rely on either the 10 percent national goal, your previous overall goal or past DBE participation rates in your program without reference to the relative availability of DBEs in your market.

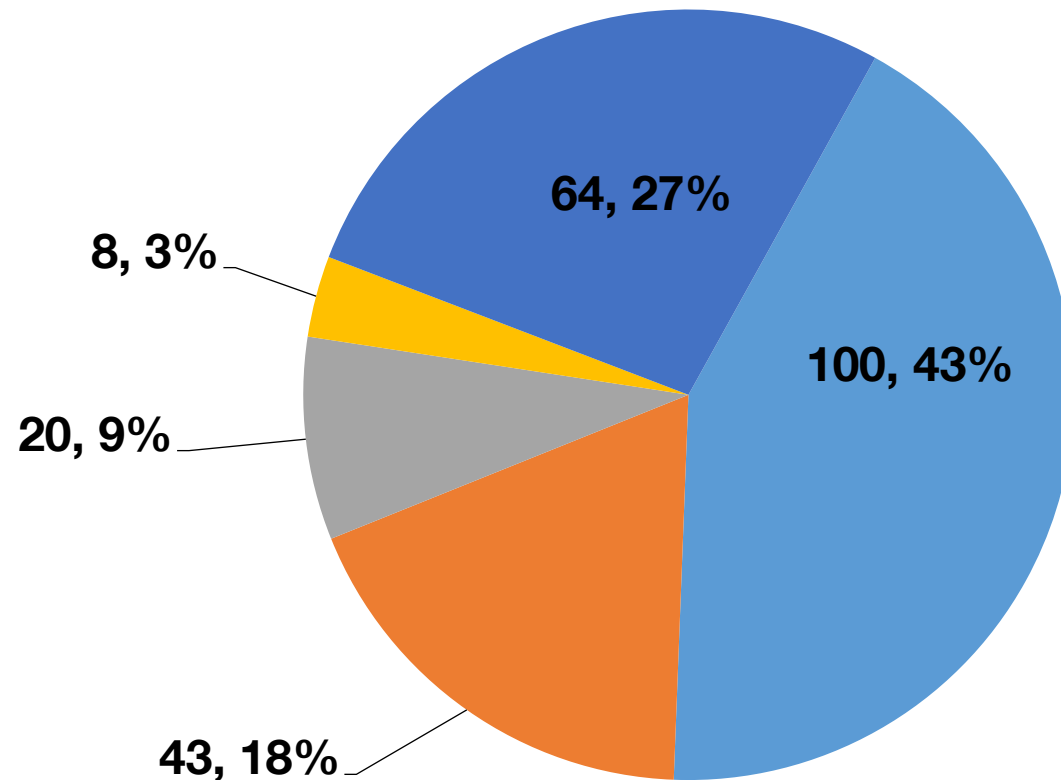
49 CFR 26.45



Fiscal Year 2025 Letting Report

Number of Projects Let in FY 2025

(Contractor Low Bid Award Data)



Total = 235

GDOT & Local Lets



As of May 30, 2025
Source Bidding
Administration

Estimate		\$ 3,458,605.95		
Project		0015689	PROPOSED BASELINE DBE GOAL	14%
County		Henry		

SUBCONTRACT MARKET		3291115.95
DBE AVAILABILITY		0.21
DBE GOAL AMOUNT		\$ 499,603.62

95%

Estimate work code	Vendor Work Code	Work Class Desc		Certified	Not Certified	All	WORK CODE ESTIMATE	WEIGHTED FACTOR	DBE MARKET BASELINE
								WORK CODE ESTIMATE / DBE SUB MARKET	WGHTD FACTOR * (CERTIFIED / ALL)
150	150	TRAFFIC CONTROL		11.00	42.00	53.00	\$ 210,000.00	0.06	0.01
163	163	MISCELLANEOUS EROSION CONTROL ITEMS		12.00	34.00	46.00	\$ 106,030.00	0.03	0.01
165	163	MAINTENANCE EROSION CONTROL ITEMS		12.00	34.00	46.00	\$ 18,260.00	0.01	0.00
167	167	WATER QUALITY MONITORING		0.00	6.00	6.00	\$ 36,900.00	0.01	0.00
171	163	SILT FENCE		12.00	34.00	46.00	\$ 4,140.00	0.00	0.00
210	205	GRADING COMPLETE		10.00	60.00	70.00	\$ 711,000.00	0.22	0.03
310	310	GRADED AGGREGATE CONSTRUCTION		14.00	56.00	70.00	\$ 317,200.00	0.10	0.02
402	400	REC HOT MIX ASPHALTIC CONCRETE CONSTRUCTION		7.00	29.00	36.00	\$ 754,415.00	0.23	0.04
432	432	MILL ASPHALT PAVEMENT		6.00	19.00	25.00	\$ 9,540.00	0.00	0.00
439	439	PCC PAVEMENT		12.00	29.00	41.00	\$ 186,300.00	0.06	0.02
441	441	MISCELLANEOUS CONCRETE		29.00	84.00	113.00	\$ 375,900.00	0.11	0.03
456	431	INDNT, CNTR LN RUM STRP - GND-IN-PL(CON)		0.00	9.00	9.00	\$ 9,360.00	0.00	0.00
500	500	CONCRETE STRUCTURES		4.00	62.00	66.00	\$ 10,450.00	0.00	0.00
550	550	STRM DR PIPE, PIPE-ARCH CLVT, SD DR PIPE		15.00	64.00	79.00	\$ 137,398.00	0.04	0.01
636	636	HIGHWAY SIGNS		6.00	18.00	24.00	\$ 67,496.70	0.02	0.01
653	653	THERMOPLASTIC TRAFFIC STRIPE		2.00	9.00	11.00	\$ 21,687.25	0.01	0.00
668	668	MISC DRAINAGE STRUCTURES		14.00	42.00	56.00	\$ 59,700.00	0.02	0.00
680	680	LIGHTING STANDARDS AND LUMINAIRES		3.00	13.00	16.00	\$ 70,000.00	0.02	0.00
682	680	ELECTRICAL / CONDUIT		3.00	13.00	16.00	\$ 43,835.00	0.01	0.00
700	700	GRASSING		10.00	15.00	25.00	\$ 110,295.00	0.03	0.01
702	702	VINE, SHRUB, AND TREE PLANTING		1.00	3.00	4.00	\$ 22,209.00	0.01	0.00
716	700	EROSION CONTROL MATS, SLOPES		10.00	15.00	25.00	\$ 9,000.00	0.00	0.00

Demonstrated Participation Opportunities



Project Participation Opportunities

DBEs At Work

Project: 0009931 Roundabout

Contract Amount \$4,744,744.25

Prime Contractor: CMES

DBE Goal: 13%

Final DBE Goal: 13.51%

DBE Subs:

Celebrity Fence – Fencing

\$37,259.00

Lagniappe Dev. Co. – Flat Concrete \$410,065.54

Palmer, Inc - Hauling

\$66,973.59

G & J Trucking – Hauling

\$56,175.00

Highway Services Inc – Highway Signs

\$70,491.80

DBE Goal Attainment FY 2025 (Oct.-Mar)

- The Agency's overall DBE goal is based upon the prime and subcontract participation opportunity awarded to DBE firms,
- The Agency's prime contract value was \$1.3 B,
- The awarded contracts to DBE firms equaled \$137 M,
- This awarded amount represents a 10.15% goal attainment.

DBE Participation Opportunities Beyond Federal \$\$\$

State Funded Capital Construction

\$68 million

Routine Maintenance

\$4.2 million

TIA

\$4.3 million

Total (Other \$\$\$) \$76.5 million

QUESTIONS???





STATE TRANSPORTATION BOARD

Program Delivery Committee

July 16, 2025



I-285/I-20 East Interchange

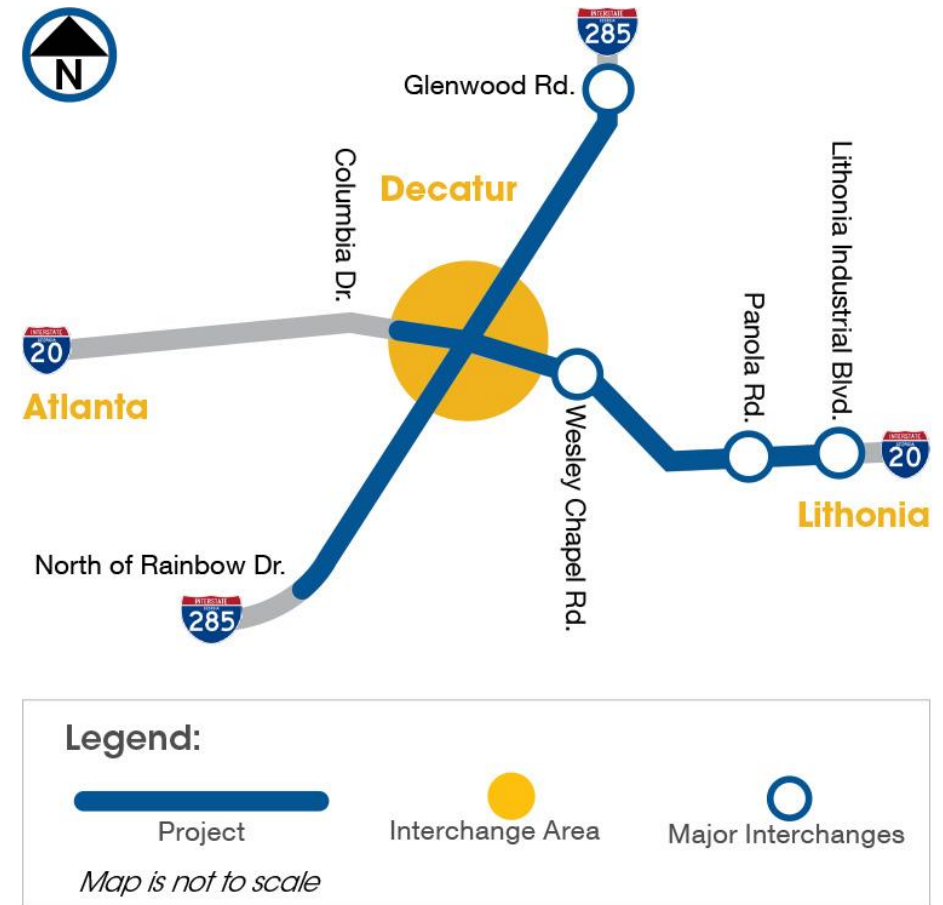
State Transportation Board

Beau Quarles, P.E.
P3 Post-Let Asst. Administrator
July 16, 2025

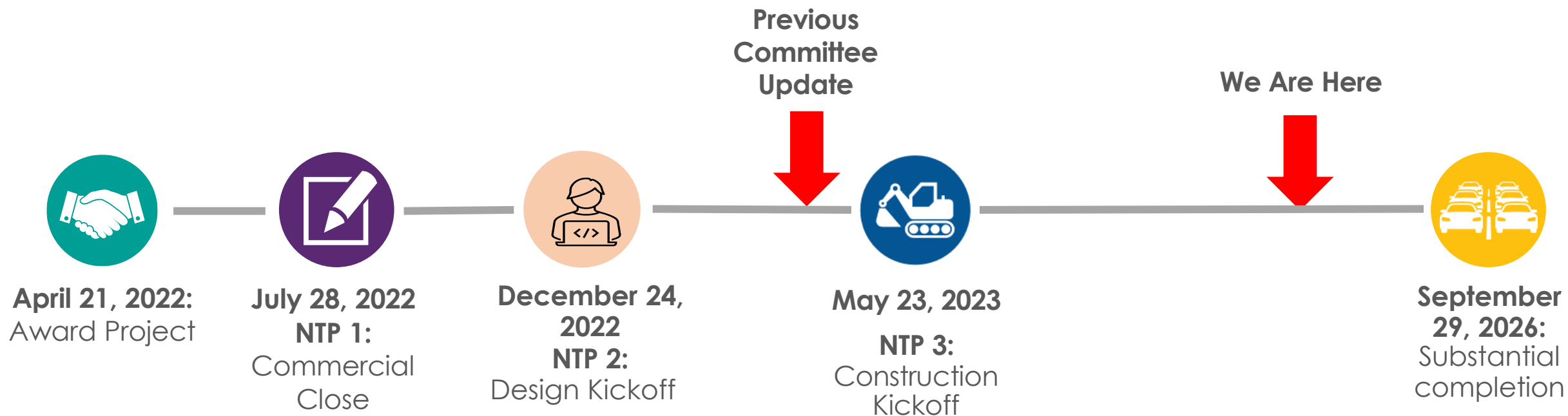


I-285/I-20 East Interchange Overview

- Reconstruction of the interstate system-to-system ramps at the I-285/I-20 Interchange east of Atlanta
- Addition of a combination of collector-distributor (CD) lanes and auxiliary lanes along I-20 east of the I-285/I-20 East Interchange, plus a northbound auxiliary lane up to Glenwood Road
- Replace Miller Road and Fairington Road overpass bridges and the I-20 bridge over Snapfinger Creek.



Project Timeline



Construction Updates

I-285 @ I-20 Interchange



New I-285 SB to I-20 EB Ramp
New I-20 WB to I-285 SB Ramp



I-20 WB to I-285 SB Tie-in
Demo of Existing I-285 SB to I-20 EB Ramp

I-20 @ Wesley Chapel Rd



I-20 Looking East



I-20 Looking West

I-20 Bridge Over Snapfinger Creek

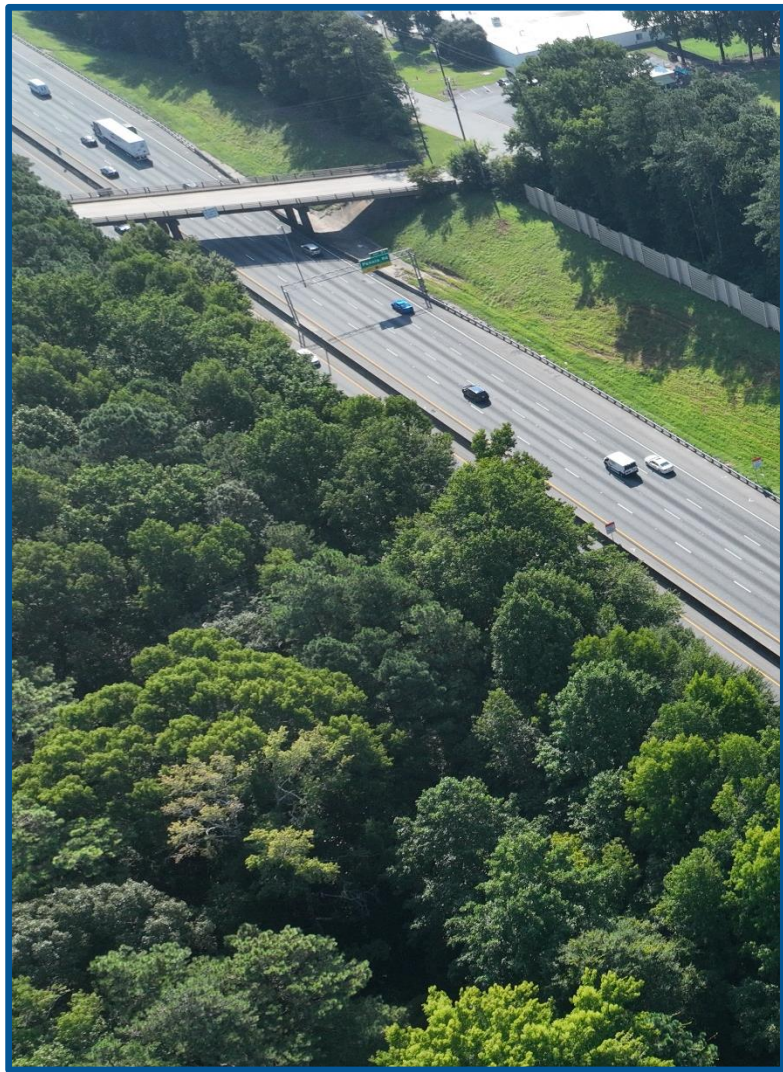


I-20 Contraflow
New I-20 EB Bridge Construction

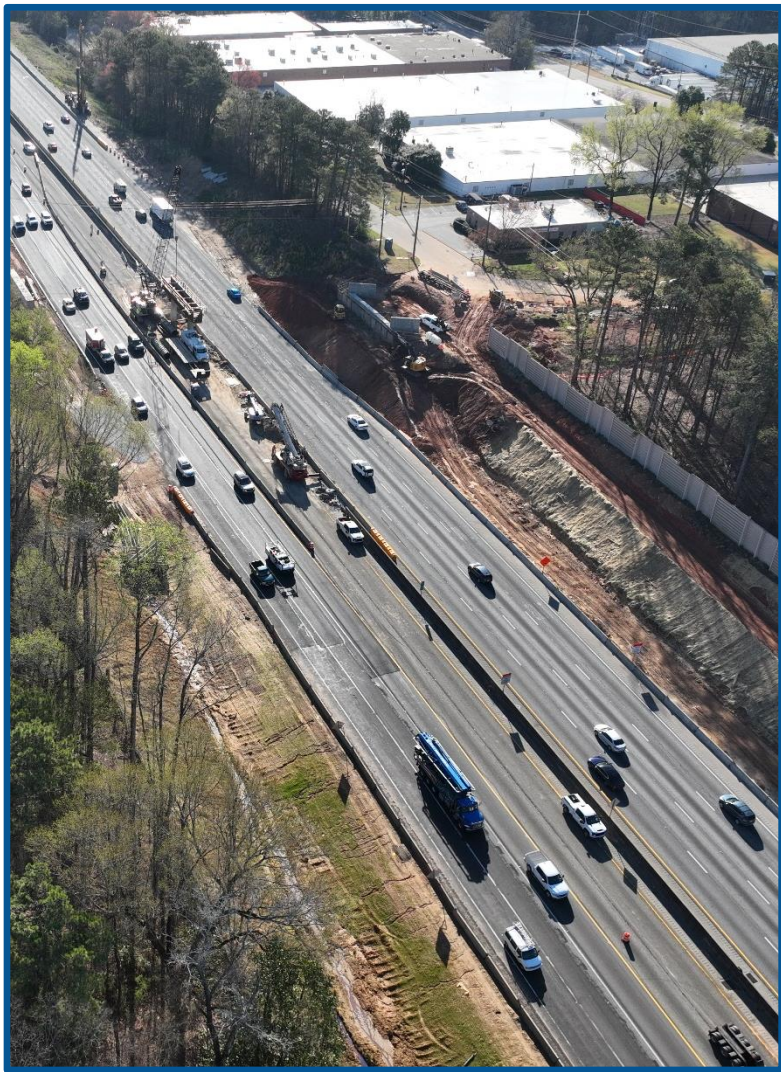


I-20 Contraflow

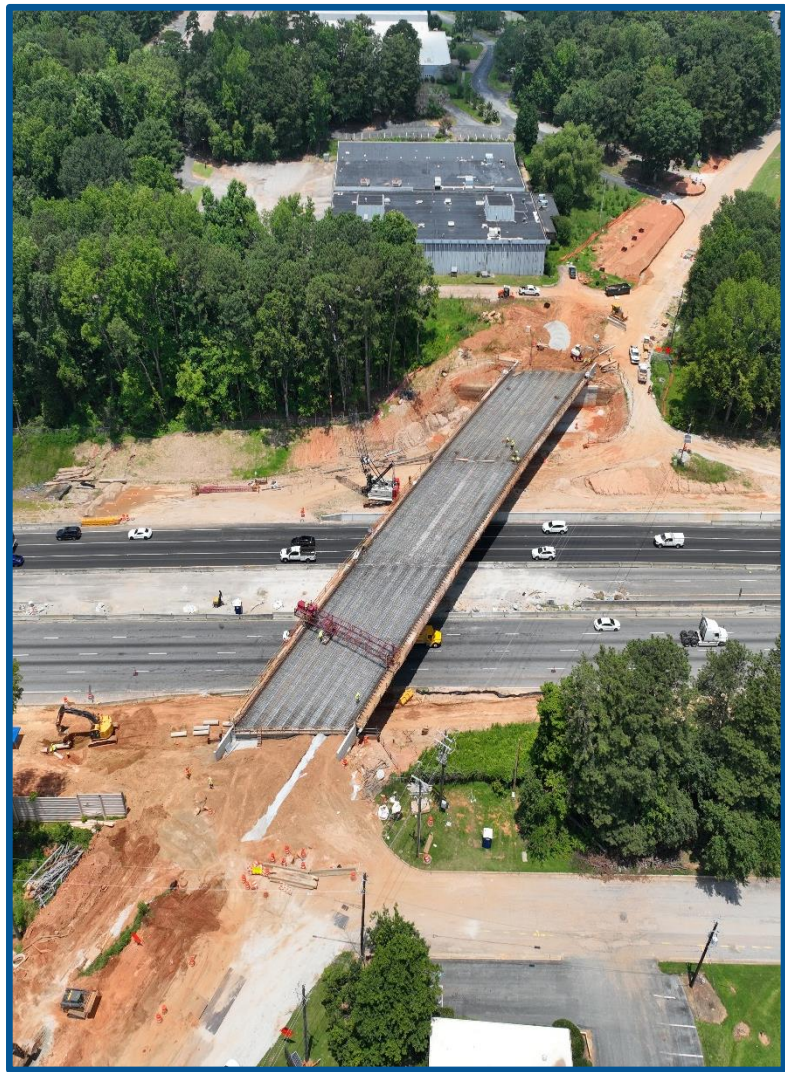
Miller Road Bridge Over I-20



Prior to Construction



After Demo



Beams Set and Prepping Deck Pour

I-20 @ Panola Rd



I-20 Looking East



I-20 Looking West

Fairington Road Bridge Over I-20



I-285 NB @ Glenwood Rd



I-285 Looking South



I-285 Looking North



Questions?



I-285/I-20 West Interchange

State Transportation Board

Donald Stull
Post-Let Project Manager
July 16, 2025



Project Overview

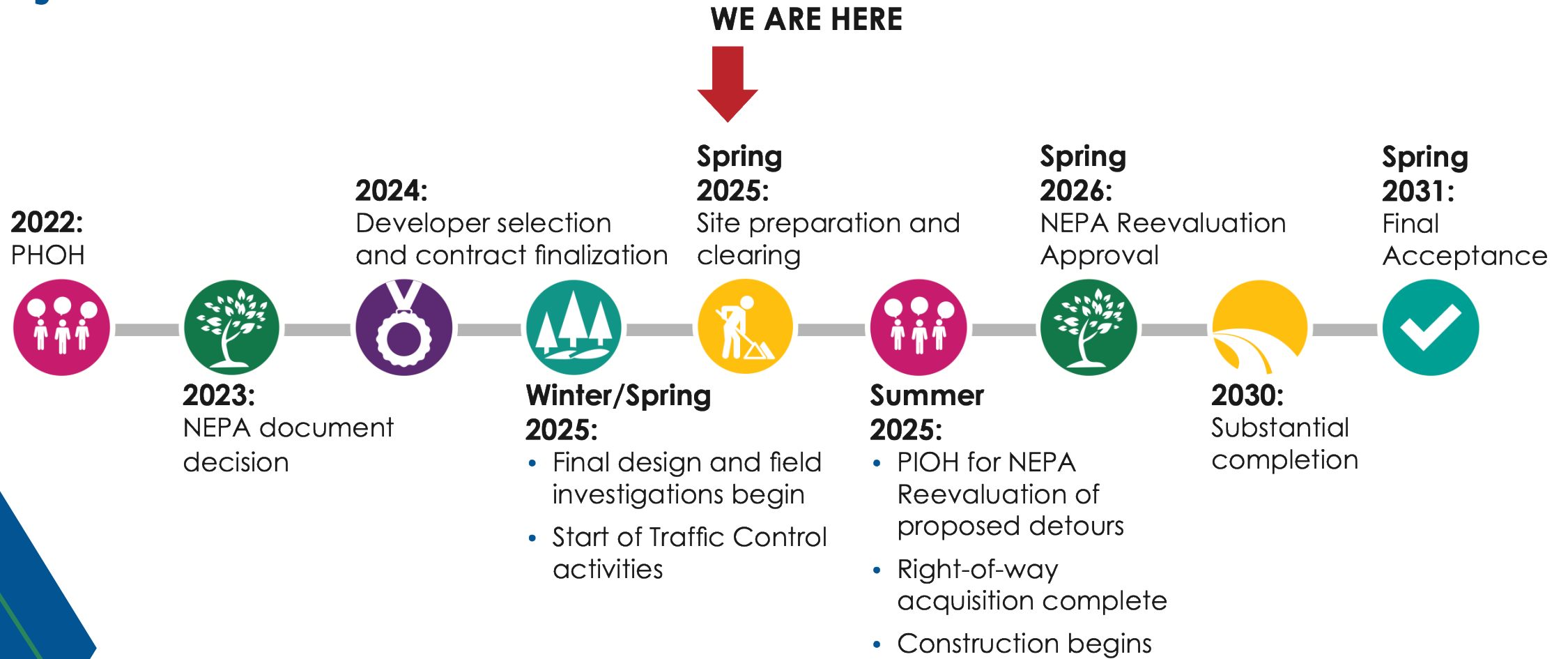
- Ranked as the 10th most congested interchange nationally by the American Transportation Research Institute.
- Reconstruct and widen several interstate system-to-system ramps at the I-285/I-20 interchange
- Add a combination of connecting lanes and auxiliary lanes along I-20 west and I-285 north of the interchange.
- Improve traffic flow and enhance safety and operations within the project limits.



A photograph of a construction site, likely a bridge deck, with a blue overlay. A yellow CAT excavator is positioned in the center background. Several workers in high-visibility vests and hard hats are visible. The scene shows a large rectangular opening in the concrete deck, with steel reinforcement beams visible below. The text "Construction Updates" is overlaid in white. A white diagonal graphic element is on the right side.

Construction Updates

Project Timeline



Published May 2025

Information and schedule are subject to change.

Alternative Technical Concepts

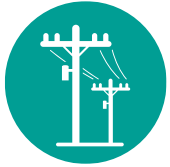
UPDATED IMPROVEMENTS

- Optimized interchange layout by relocating/combining ramps
- Reduced overall height of interchange by approximately 50 ft
- Extended length of westbound connecting lanes and maintaining existing I-20 centerline
- Relocation of I-285 southbound to be adjacent to northbound lanes
- Utilization of existing I-285 southbound for new exit ramp to MLK Jr. Drive

BENEFITS

- A more compact interchange, horizontally and vertically
- Reduction of impacts to environmentally sensitive areas
- Reduction in anticipated noise impacts
- Estimated delay reduction of 20% and vehicle speed increase of 10%
- Longer auxiliary lanes and connecting lanes for converging and diverging vehicles
- Consolidated exit ramps from I-20 eastbound eliminate successive exits

Current Status



Field investigations and traffic control activities including surveying, geological testing, and utility coordination



Site preparation and clearing



Variable message signs have been installed



Detention ponds have been excavated



Heavy equipment has been mobilized



What's Next



Heavy construction is anticipated to start this month



Completion of right-of-way acquisition



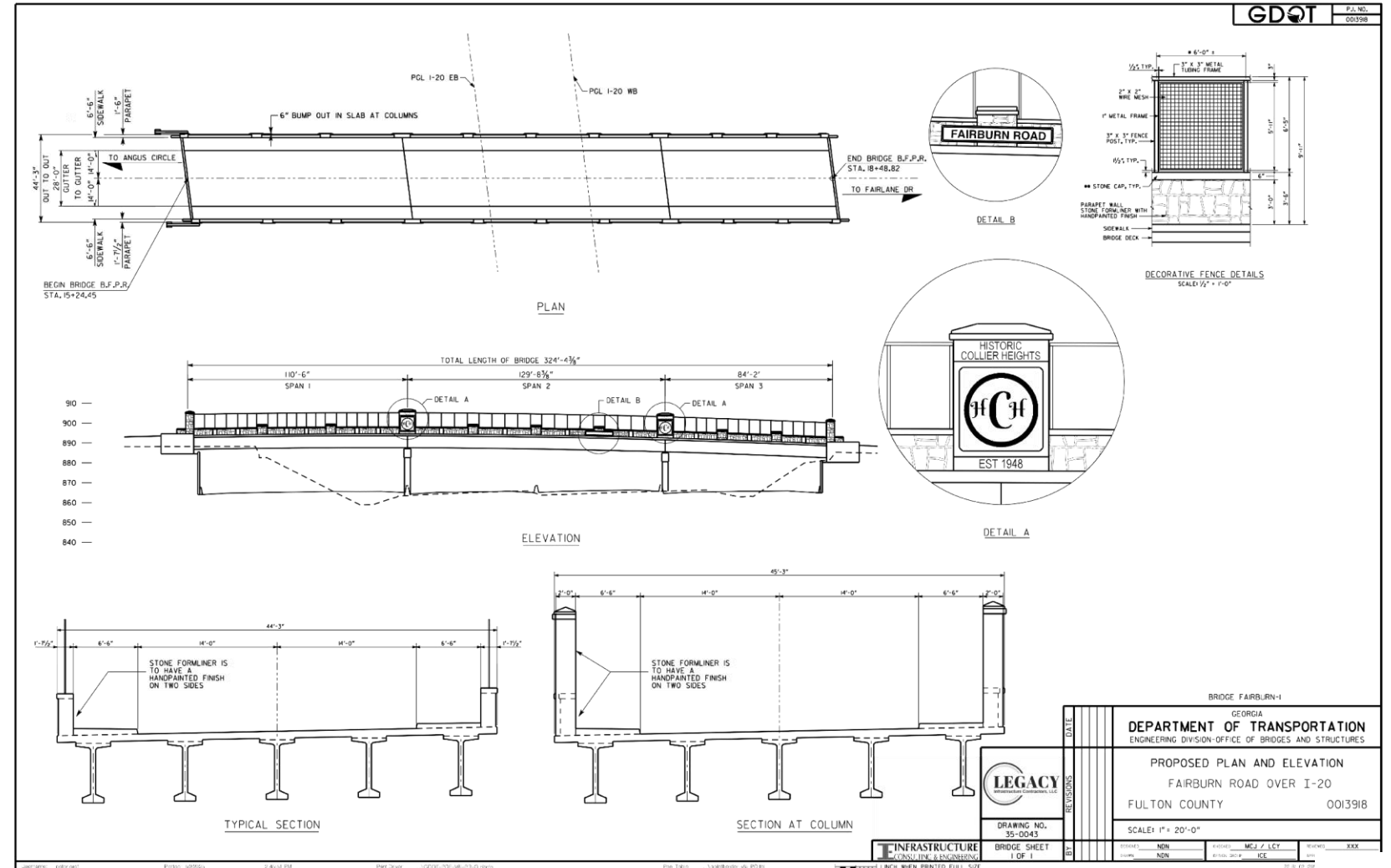
Public Meeting for NEPA reevaluation of proposed detours



Stakeholder Coordination

Fairburn Aesthetics Meeting

- The Department is committed to receive community input. On April 17, 2025, the developer held an aesthetics meeting with local groups.
- Purpose:** GDOT's commitment to actively engage with the traveling public & community



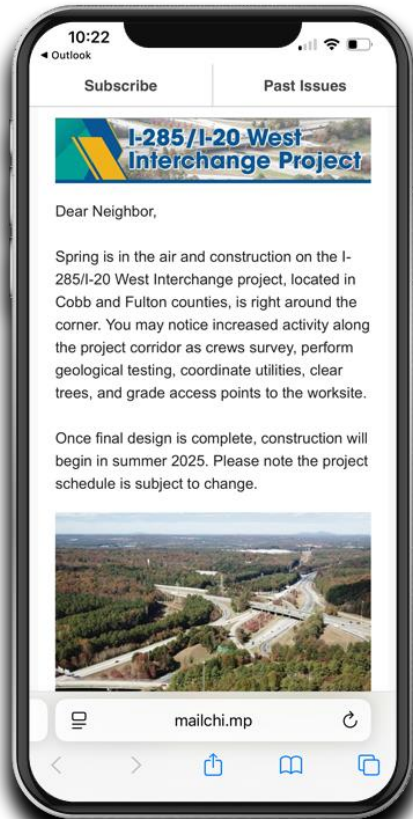
Final aesthetic treatments for the Fairburn Bridge

Public Information Meeting

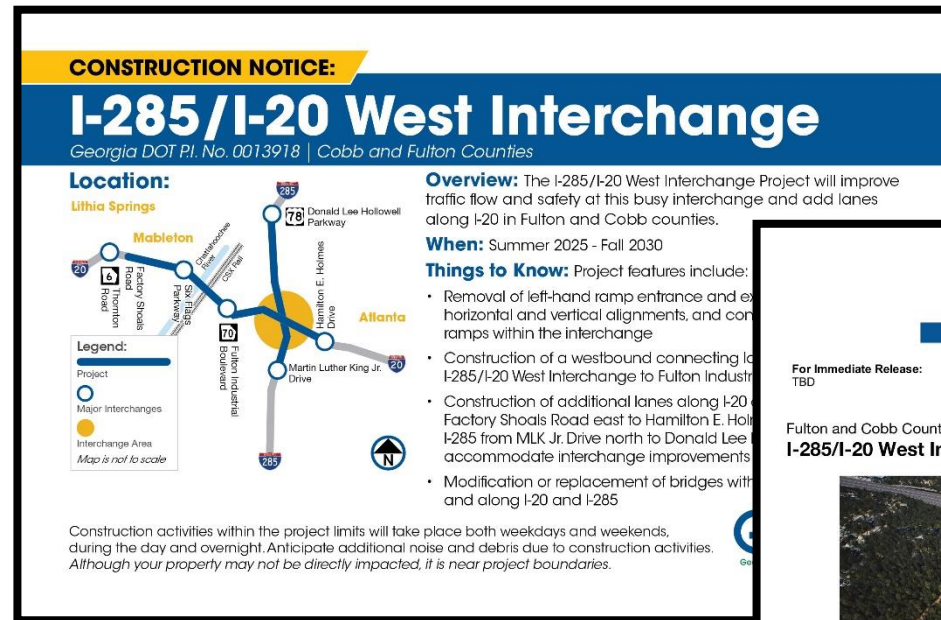
- Held on May 8, 2025, at the C.T. Martin Natatorium and Recreation Center.
- **Purpose:**
 - To provide the public with an update on the project, including changes to the design concepts, current status, and what to expect in the coming months leading up to the start of heavy construction.
 - Satisfies one of the year 1 community meetings required in the Environmental Commitments Table
- **110** in attendance:
 - State Senator RaShaun Kemp
 - Councilmember Andrea Boone



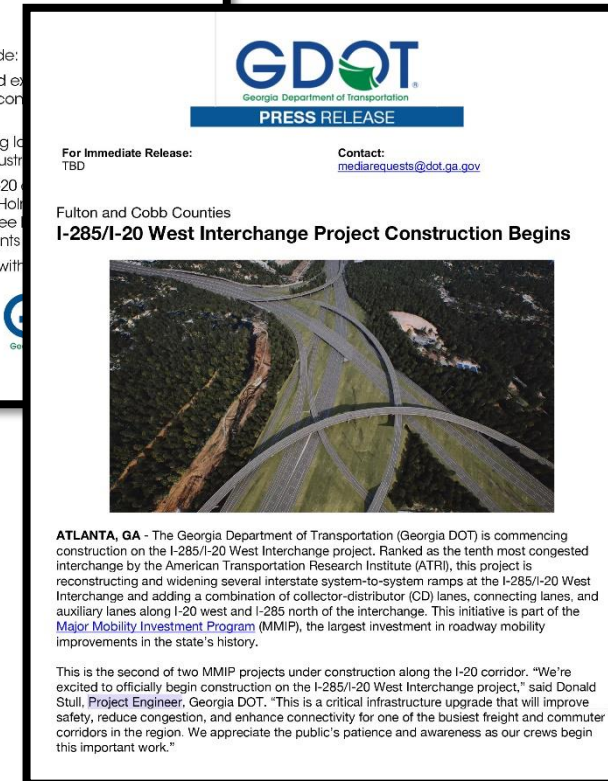
Construction Start Outreach Communications activities:



Email Marketing



Postcard



Press Release/Media Alerts



Social Media

Stay Connected

 @GeorgiaDOT

 @GADeptofTrans

 @gadeptoftrans

 www.dot.ga.gov

Project website:

<https://0013918-gdot.hub.arcgis.com/>

Georgia DOT PM: Donald Stull

Georgia DOT DPM: Binita Patel



Thank You

For Viewing



I-16/I-75 Interchange Update

Tyler Peek, P.E.
District Engineer

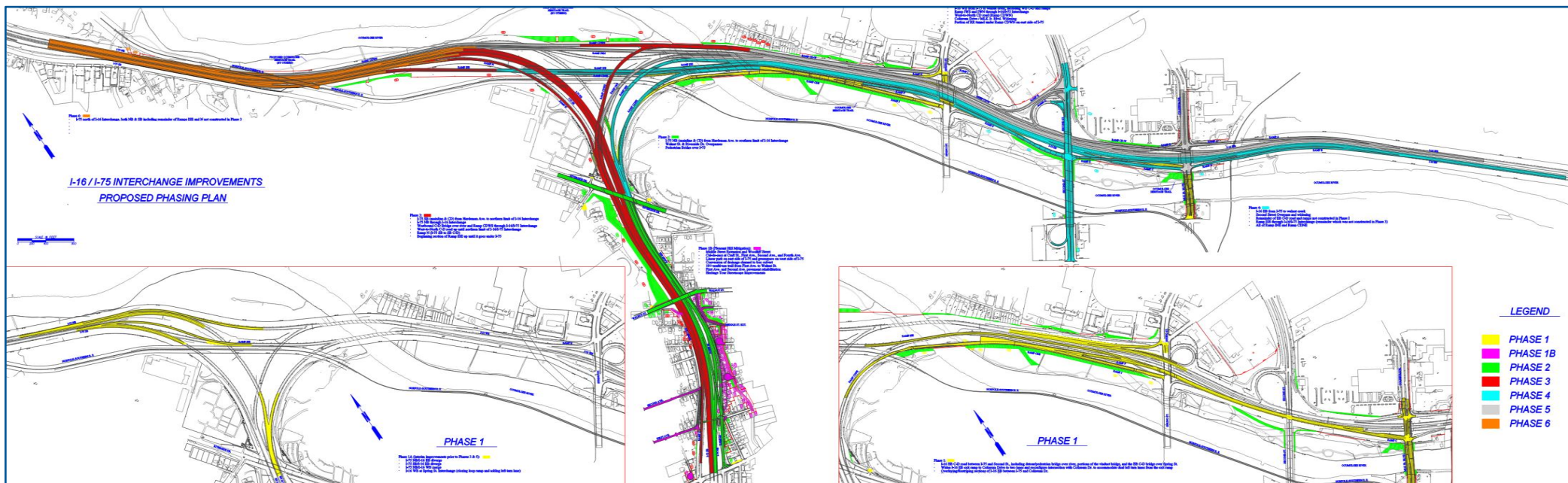
Rubin McCullors
District Construction Manager

July 16, 2025

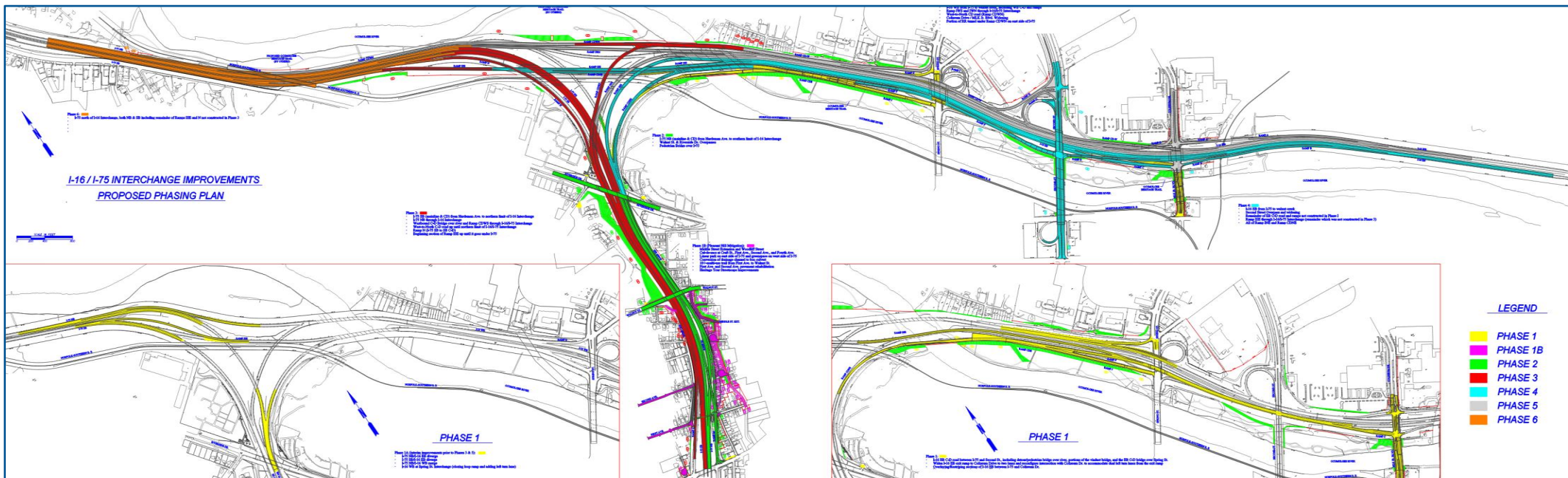


Project Overview

- Construction of additional interstate lanes, wider shoulder lanes and additional ramps.
- A new Collector/Distributor (CD) road system will be constructed parallel to both I-16 and I-75, which will allow additional non-interstate traffic capacity.
- Construction of new bridges and modifications to existing bridges and surface streets within the project area to accommodate the additional interstate and CD lanes.







Facts and Figures

- Pleasant Hill Mitigation
 - Linear Park*
 - Jefferson Long Park*
 - Lighting and information kiosks displaying Pleasant Hill history*
- 7 Bridges with railroad involvement
- Ocmulgee National Park
- 3 different contractors working together

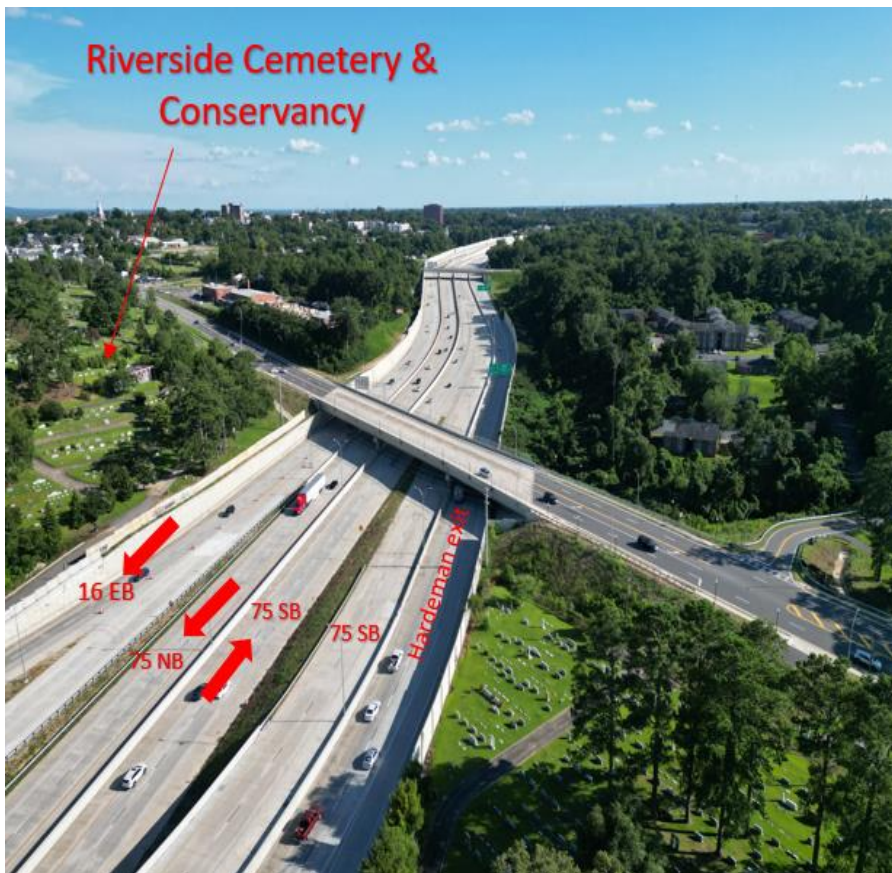


Jefferson Long Park



Linear Park

Completed Phases

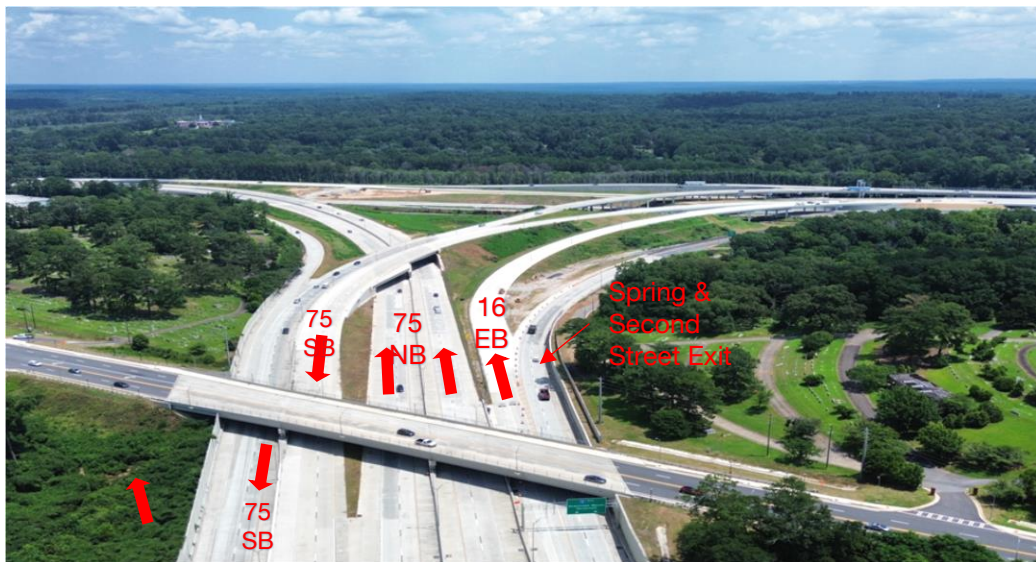


I-75 Looking South @ Riverside
Drive



I-75 Looking South @ Walnut Street

Completed Phases



I-75 Looking North @ I-16,
Riverside Drive



I-75 Looking North
@ Pedestrian Bridge

Active Construction



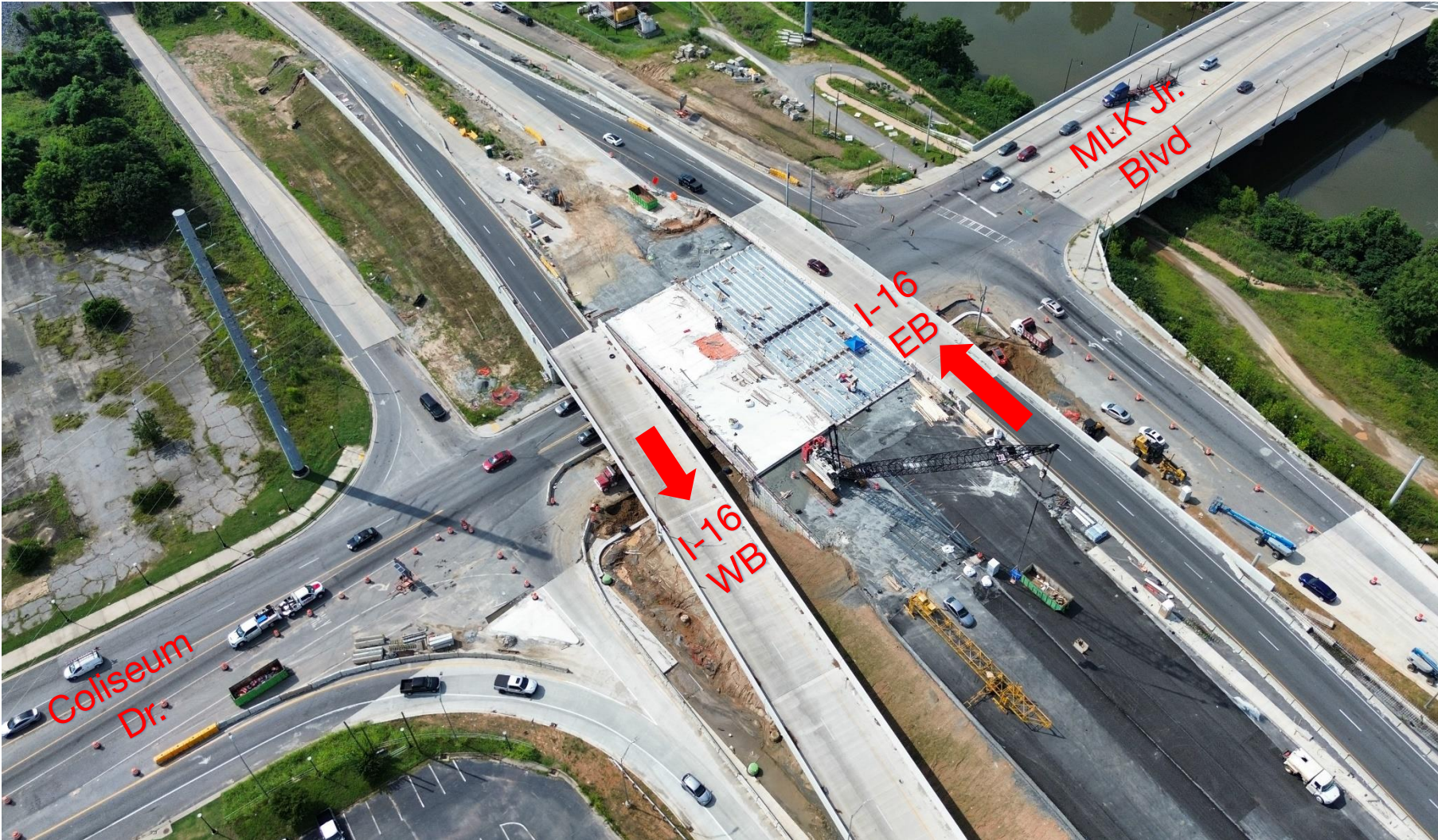
I-16 Looking West @ Ocmulgee River



I-16 Looking East @ Spring Street



Second Street facing downtown



MLK interchange facing I-16 EB

Active Construction



I-16 Looking East, past MLK interchange

I-16, I-75 Interchange: Next Traffic Shifts

❑ Major shifts coming up:

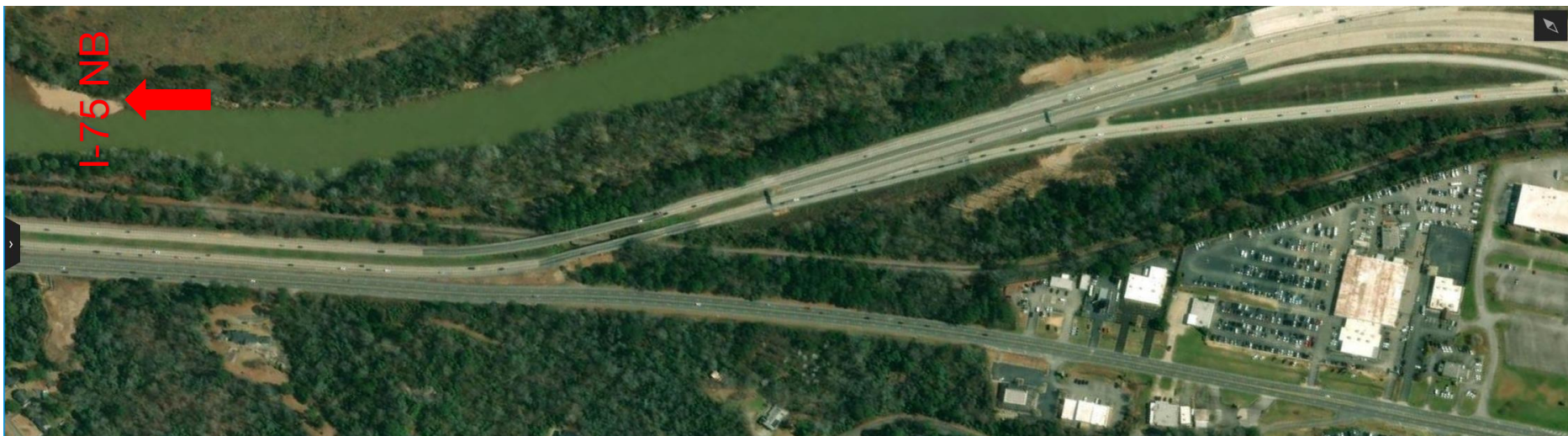
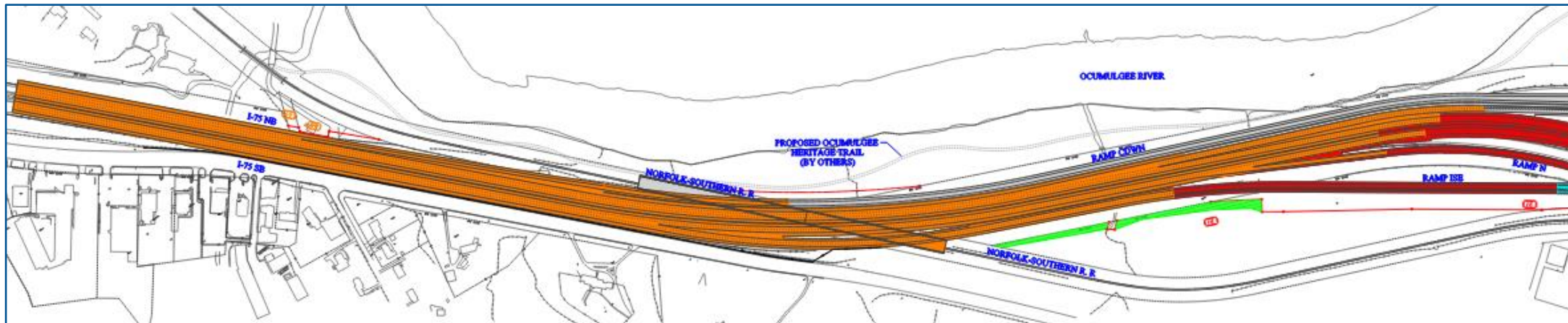
❑ New alignment for **I-75 SB to I-16 EB** (July 2025)

- *Will involve closure of access to Spring Street from I-75 SB (6-month duration)*

❑ New alignment for **I-75 NB to I-16 EB** (July 2025)



Phase 6 (coming soon)



Phase 6 (coming soon)



Interchange facing North, future Phase 6 area

Thank You!



STATE TRANSPORTATION BOARD

Committee of the Whole

June 18, 2025



CAV Program Update

Victoria Coulter, P.E.
V2X Program Manager
July 16, 2025



Overview

- Autonomous Vehicles
- V2X Overview
- Georgia Deployments and Applications
- National Deployments
- ITS World Congress – in Atlanta, August 2025

Autonomous Vehicles



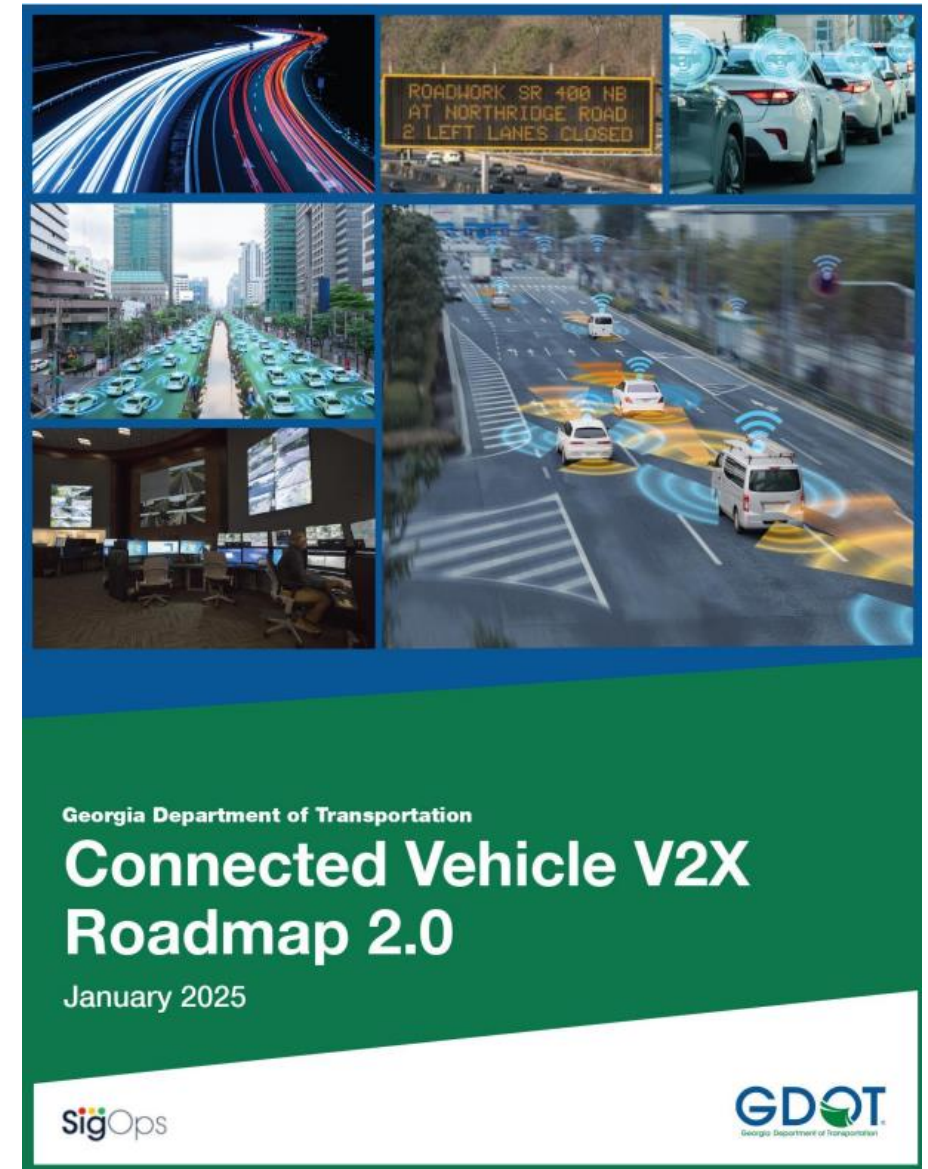
V2X Overview

- Direct communication with vehicles
- Roadside and in-vehicle infrastructure
- Share informational and safety critical messages



GDOT V2X – Roadmap

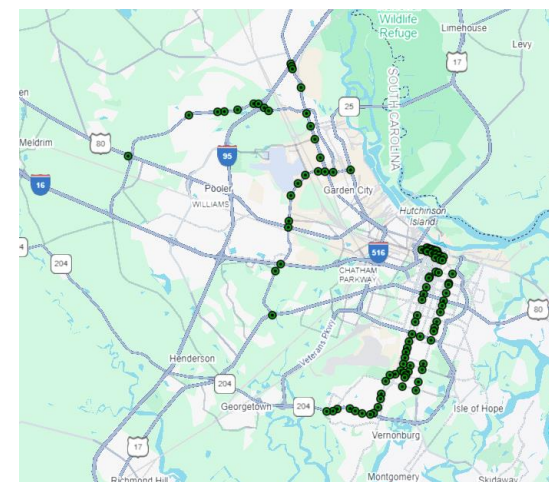
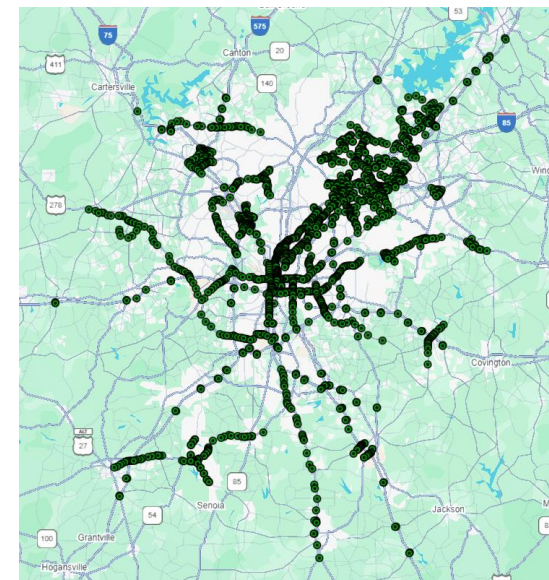
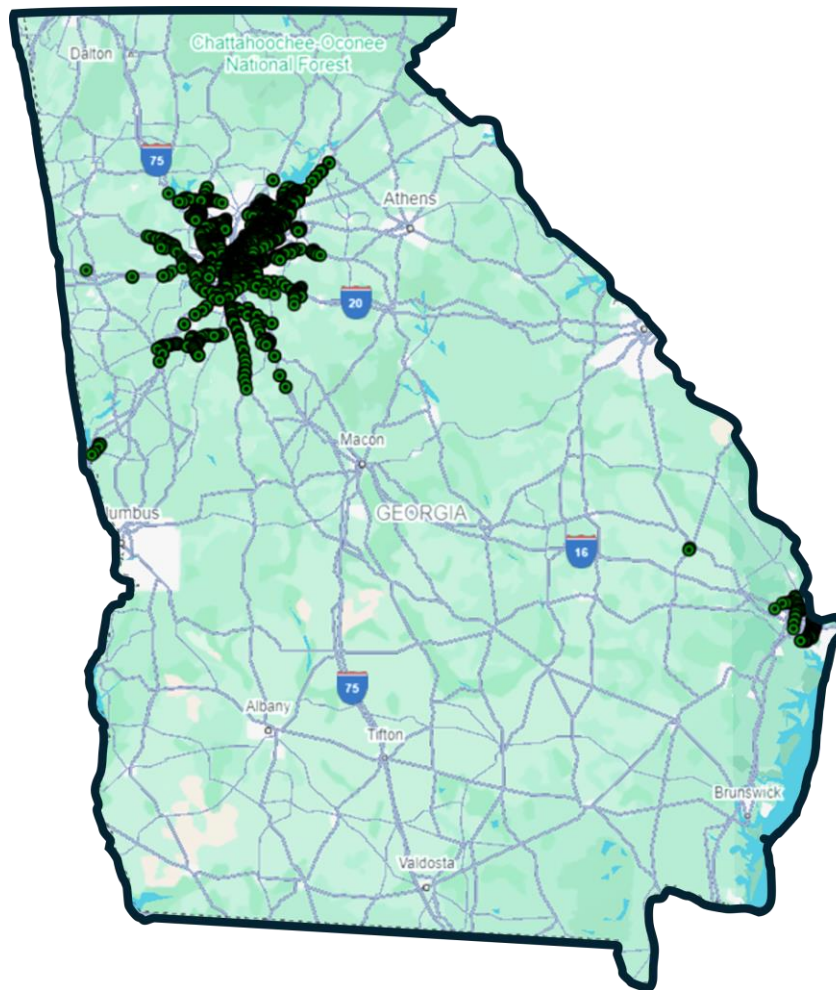
- Deploy, operate, maintain, and innovate a statewide V2X ecosystem
 - \$75M over 10 years
- Target Fleet Applications
- Participating in national efforts
- Deploying RSUs at 6500 signalized intersection on state routes in Georgia
- Deploying RSUs along interstate corridors for full V2X coverage



V2X Infrastructure

- 2300+ RSUs deployed
- Connected Intersections
- Fleet applications

SigOps



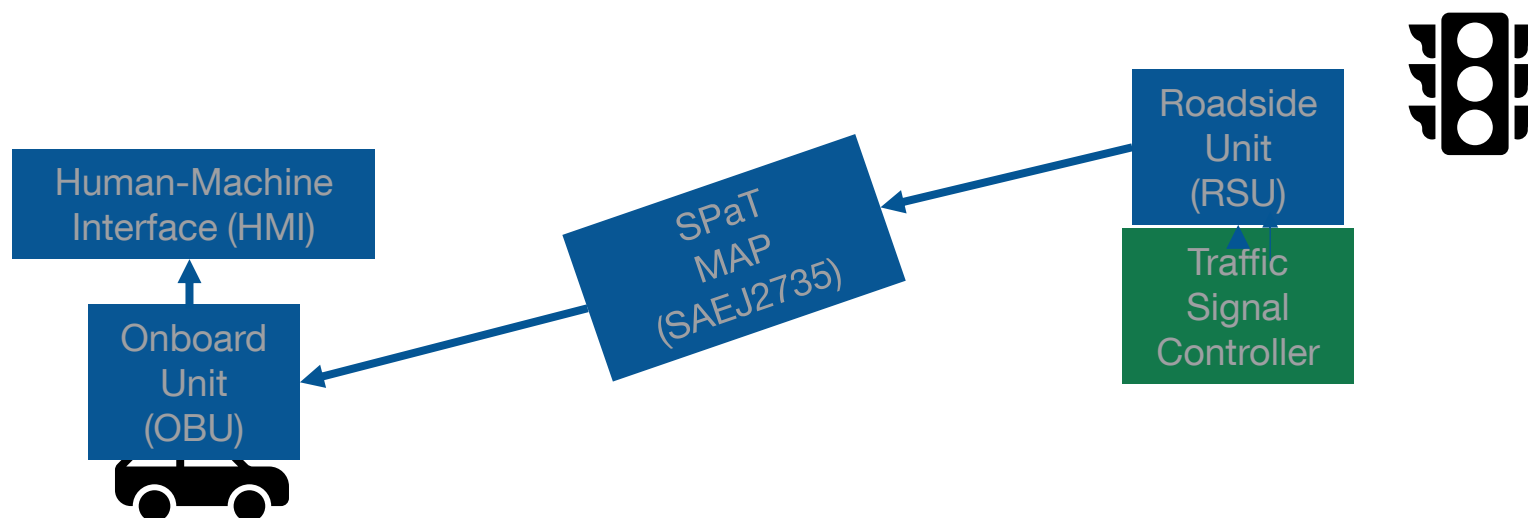
Fleet Partners



V2X - Applications

Signal Phasing and Timing/MAP

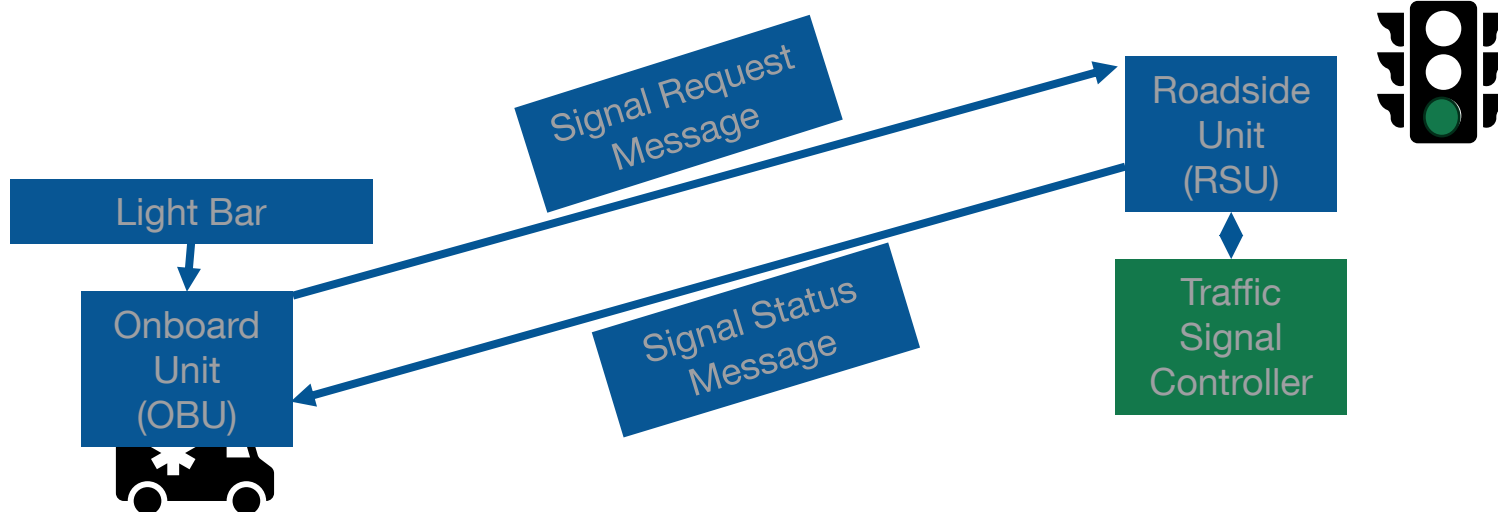
- Red Light Violation Warning
- Green Light-Optimized Speed Advisory
- SPaT Countdown



V2X - Applications

Emergency Vehicle Preemption

- Guaranteed green
- Improves emergency response time



V2X - Applications

Emergency Vehicle Preemption

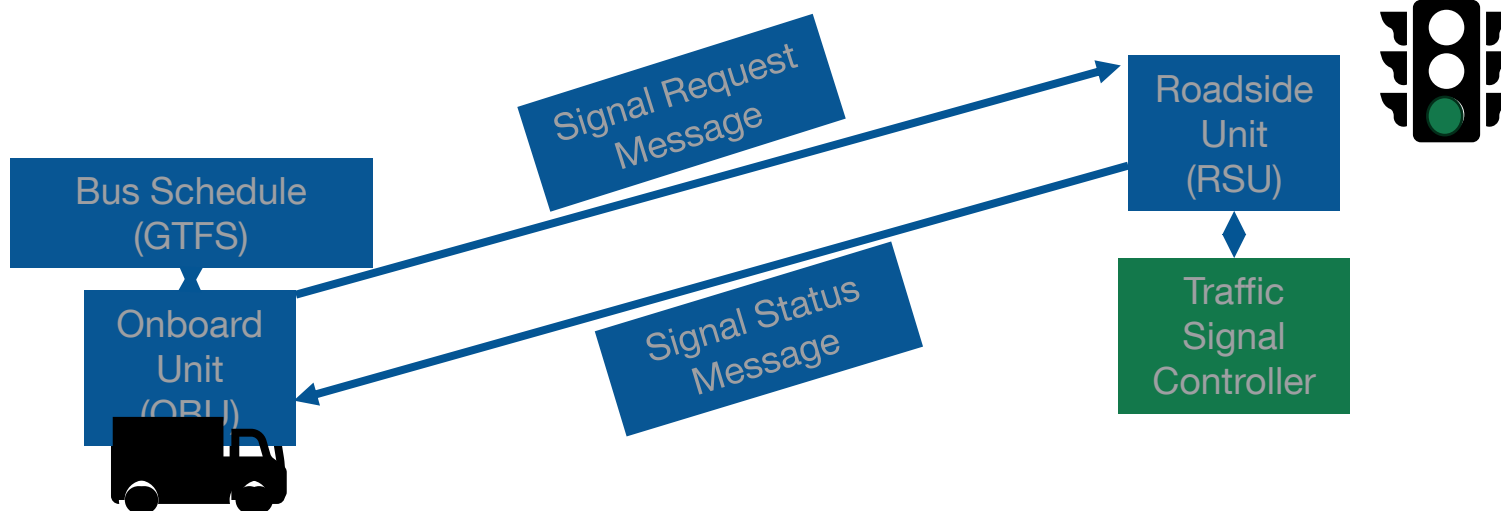
- HERO – North Avenue
- Henry County
- Gwinnett County



V2X - Applications

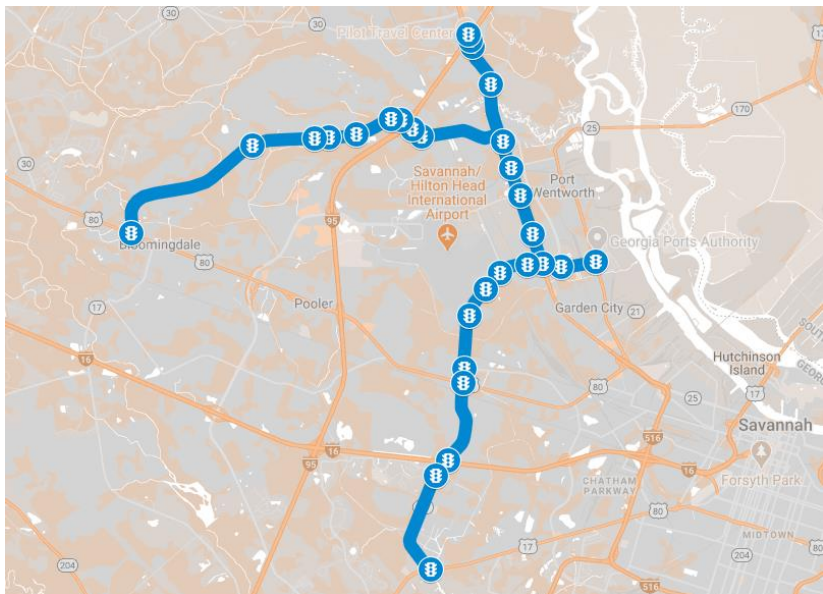
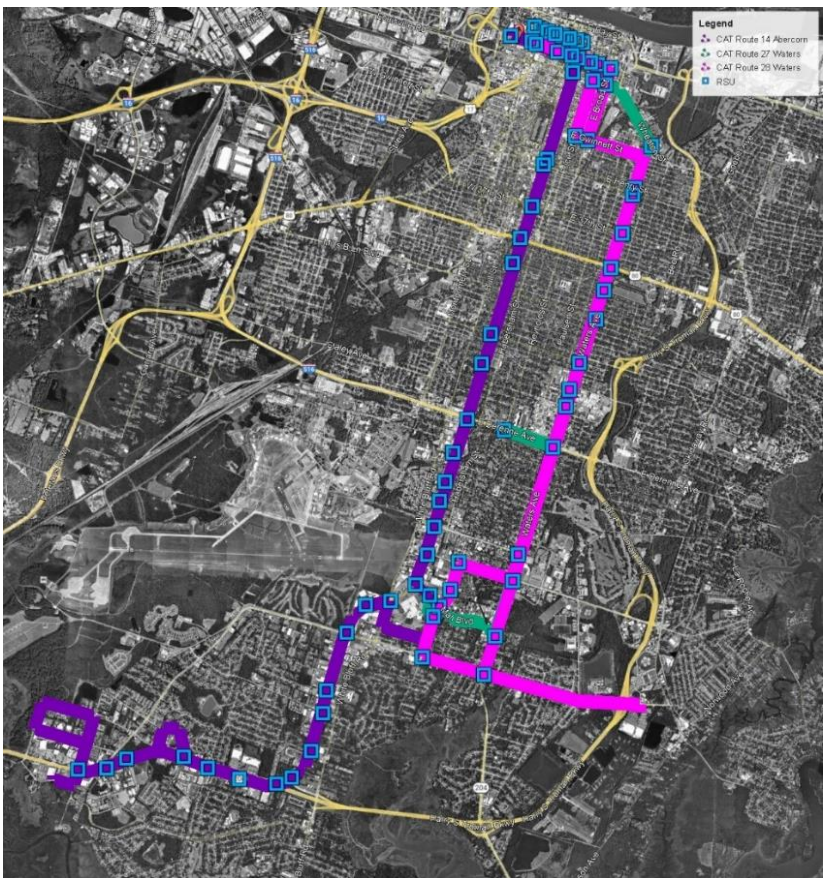
Signal Priority

- Freight, Transit
- Request additional green or early green time
- Improves On-Time Performance



V2X Applications

Signal Priority



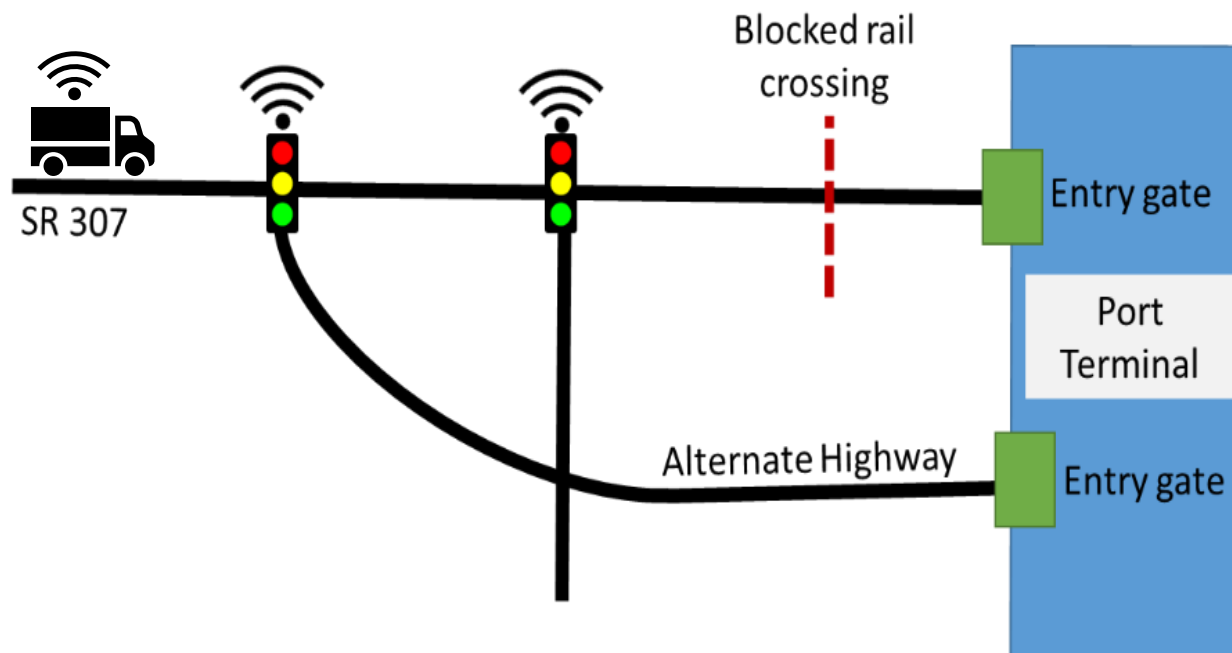
V2X - Applications

Traveler Information Message

- Weather Alerts
- Incident Alerts
- Sharp Curve Warning
- Work Zone Alerts
- Train at Grade Crossing



Example in-cab message



Building the Digital Interstates

Five (5) Design-Build Projects:

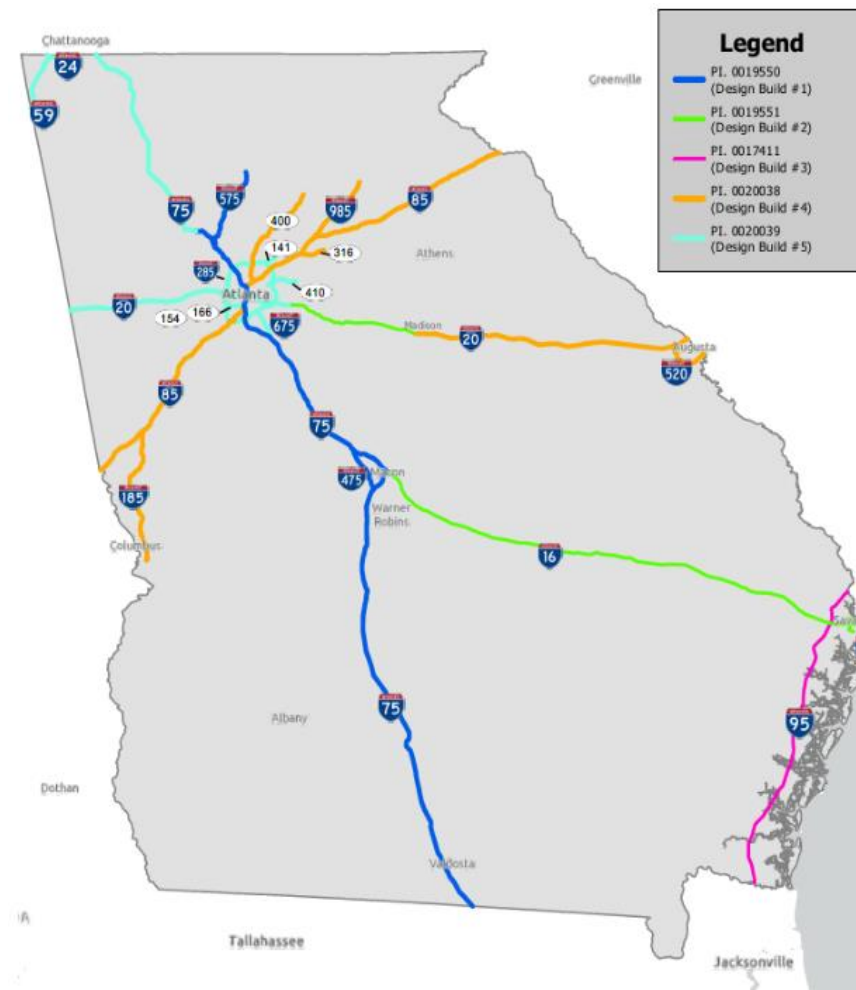
- Design-Build #1: Under Construction
- Design-Build #2: Under Construction
- Design-Build #3: Procurement Underway
- Design-Build #4: Project Programmed (FY 2028)
- Design-Build #5: Project Programmed (FY 2028)

Project Scope:

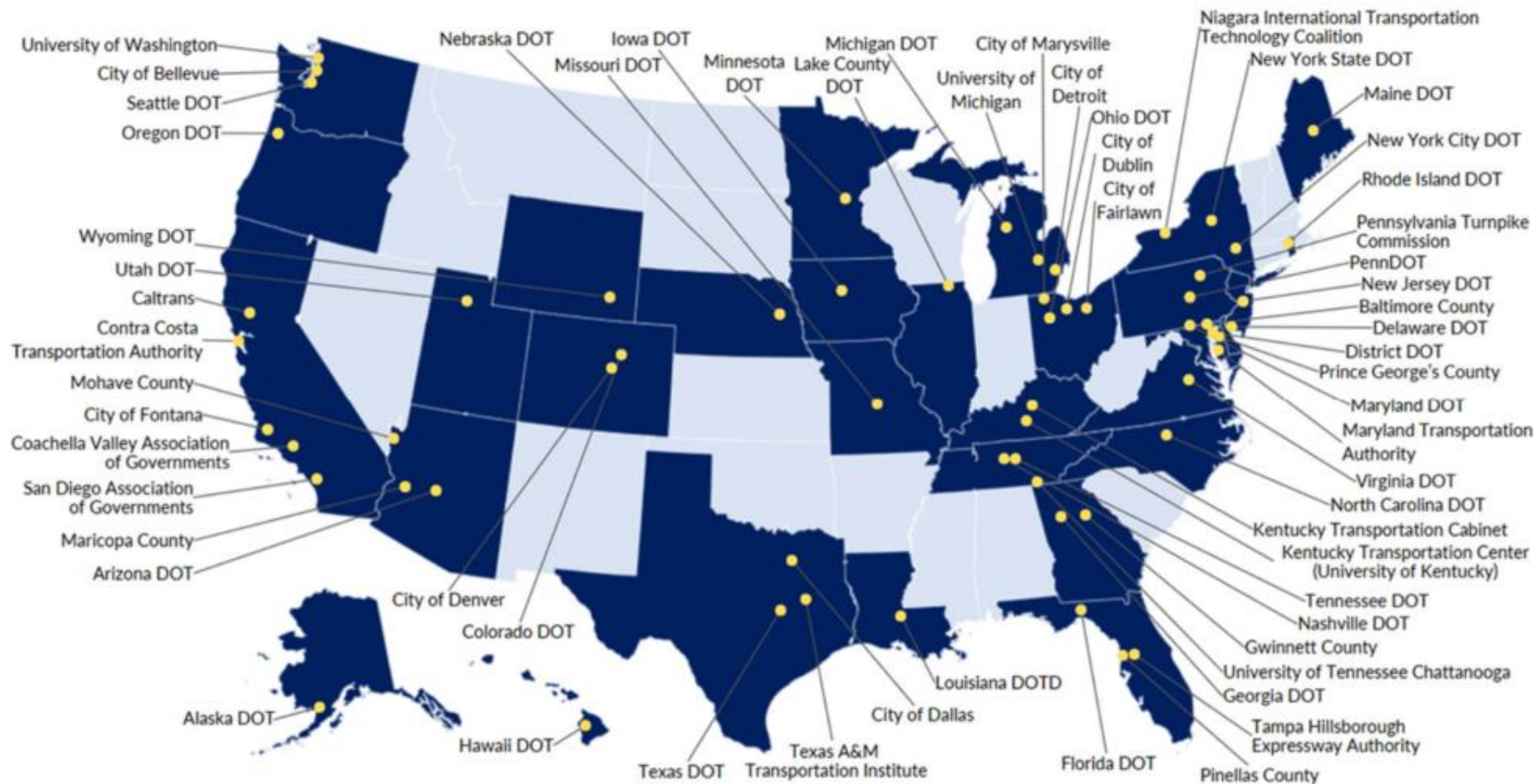
- **Communication infrastructure:** Seven (7) Conduit, Two (2) 288-Count Fiber Optic Cables
- **ITS devices:** C-V2X RSUs, CCTVs and other ITS devices

Project Goals:

- Provide infrastructure necessary to support CV and broadband initiatives
- Provide additional ITS coverage to support Interstate safety and operations



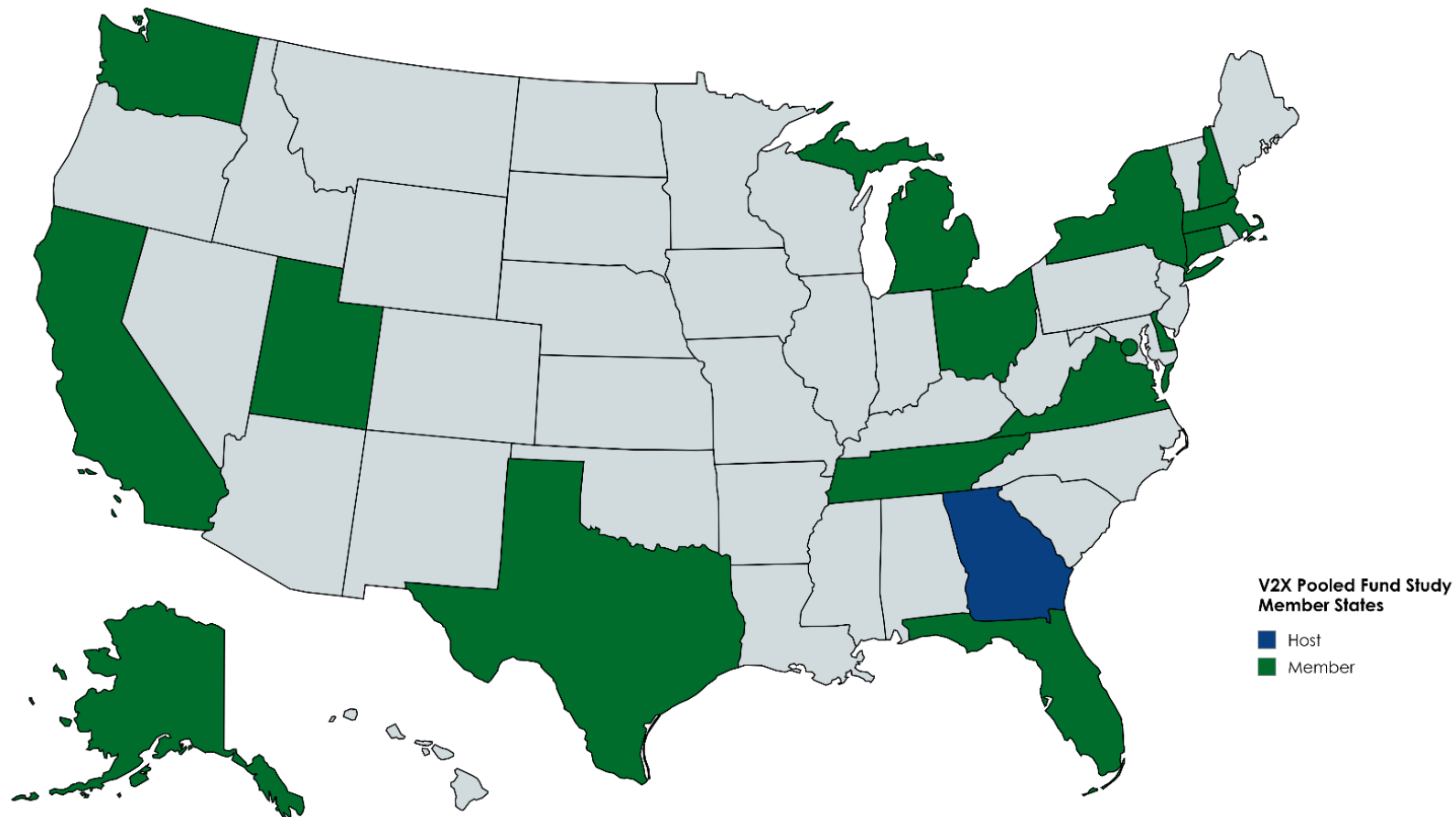
National Deployments



Source: USDOT

V2X Pooled Fund Study

- First GDOT-led Pooled Fund Study
- 19 Member Agencies
- \$3,000,000 Commitment



ITS America World Congress

The poster features a dark blue background with a complex, glowing pattern of white and orange dots and lines, resembling a network or data flow. In the top left corner, there is a white logo consisting of a globe with a stylized 'A' and the word 'ATLANTA' below it, with 'ITS WORLD CONGRESS 2025' in a small box underneath. The main text 'DEPLOYING TODAY, EMPOWERING TOMORROW' is written in large, bold, orange capital letters. Below this, the date 'AUGUST 24-28, 2025' is in white, followed by the location 'GEORGIA WORLD CONGRESS CENTER ATLANTA, GEORGIA, UNITED STATES' in white. On the left side, the year '2025' is written vertically in white. At the bottom left, there is an orange rectangular button with the text 'LEARN MORE' in white capital letters.

ATLANTA
ITS WORLD CONGRESS 2025

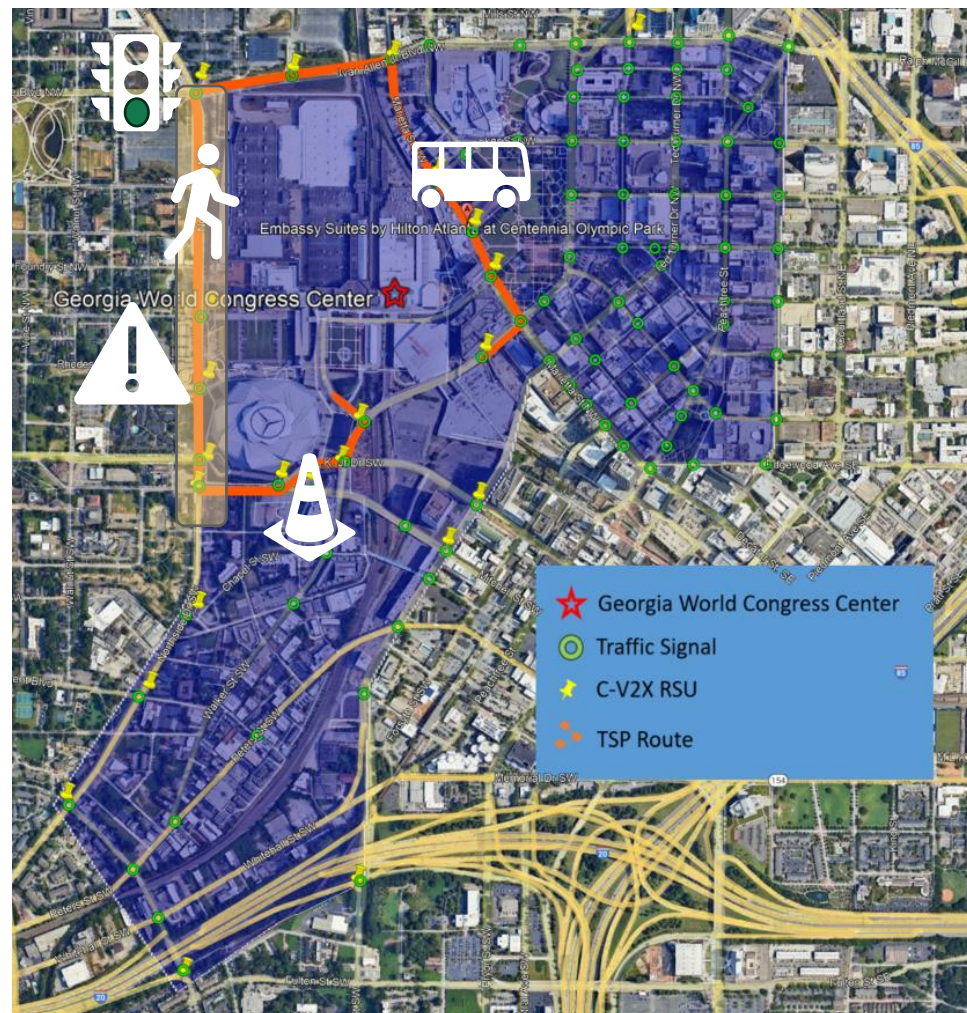
**DEPLOYING TODAY,
EMPOWERING TOMORROW**

2025 | **AUGUST 24-28, 2025**
GEORGIA WORLD CONGRESS CENTER
ATLANTA, GEORGIA, UNITED STATES

LEARN MORE

ITS America World Congress

- Day One Deployment District
- GDOT Demonstrations
- Emergency Responder Demos



THANK
YOU



Victoria Coulter, PE
V2X Program Manager

vcoulter@dot.ga.gov



<https://www.dot.ga.gov/connectedvehicles>



Property Donation to the National Park Service (Ocmulgee Mounds National Historical Park – Macon, GA)

Eric Duff

State Environmental Administrator

Seth Clark

Executive Director,

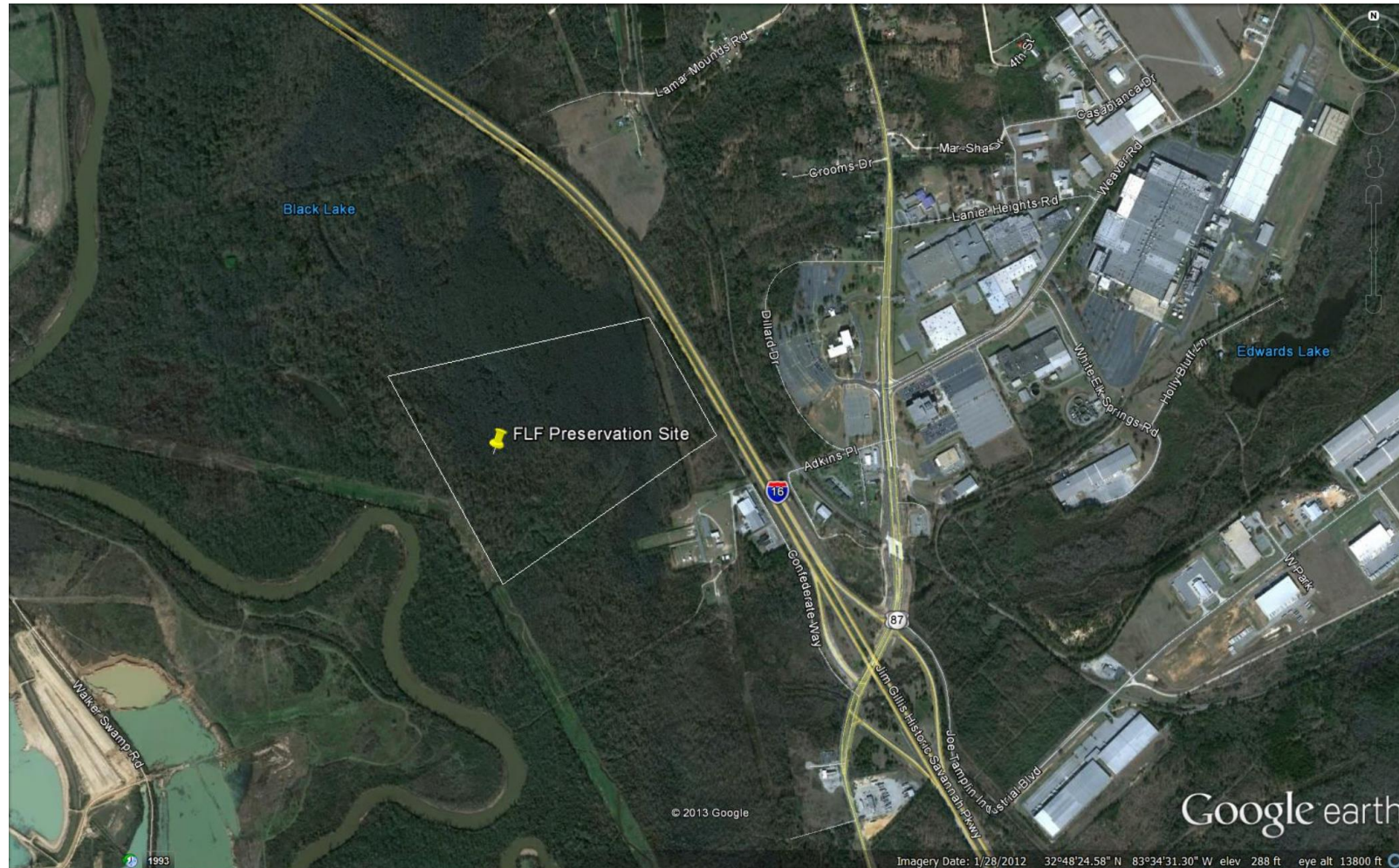
Ocmulgee National Park and Preserve Initiative

July 16, 2025

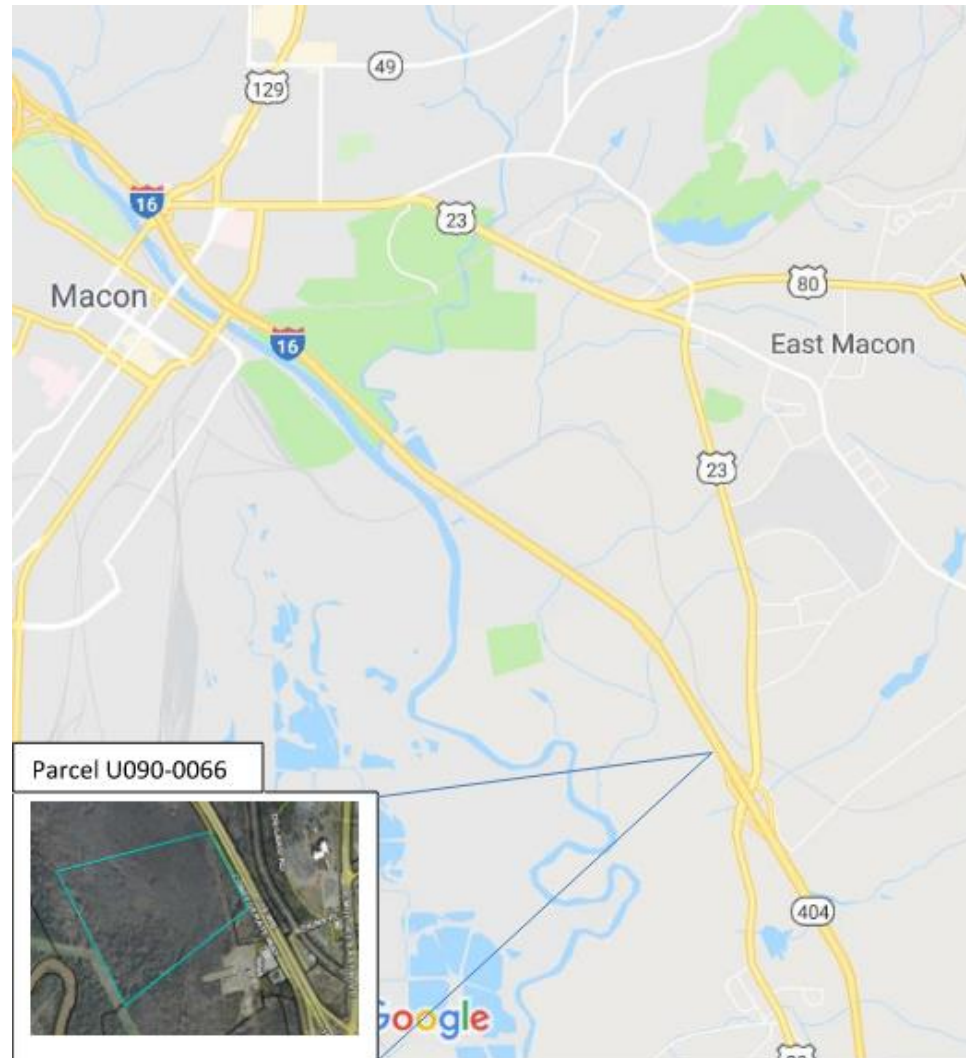


Muscogee (Creek) Tribal Members and GDOT @
Ocmulgee Mounds National Historic Park

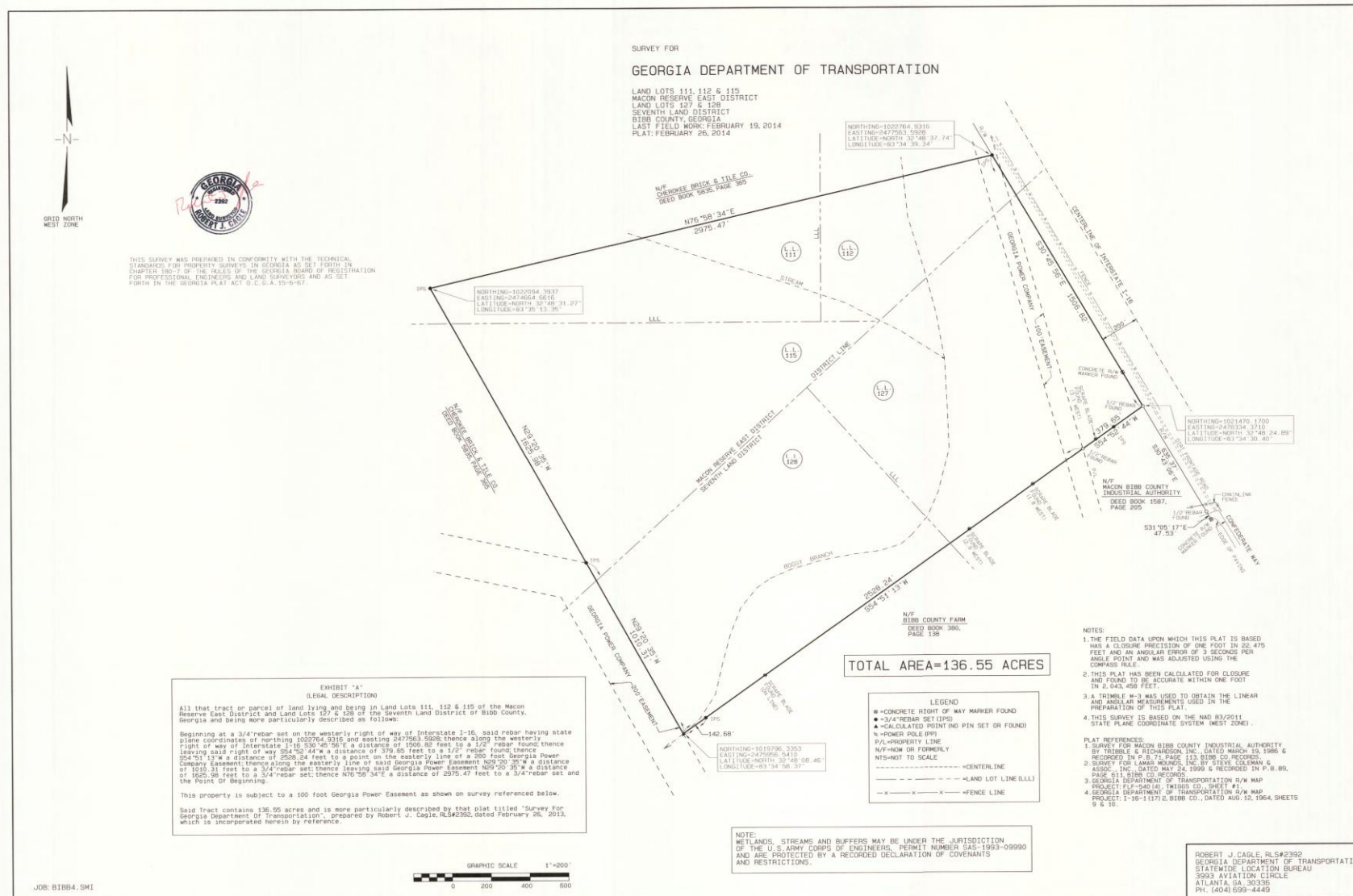
Property Donation to the National Park Service (Ocmulgee Mounds National Historical Park – Macon, GA)



Property Donation to the National Park Service (Ocmulgee Mounds National Historical Park – Macon, GA)



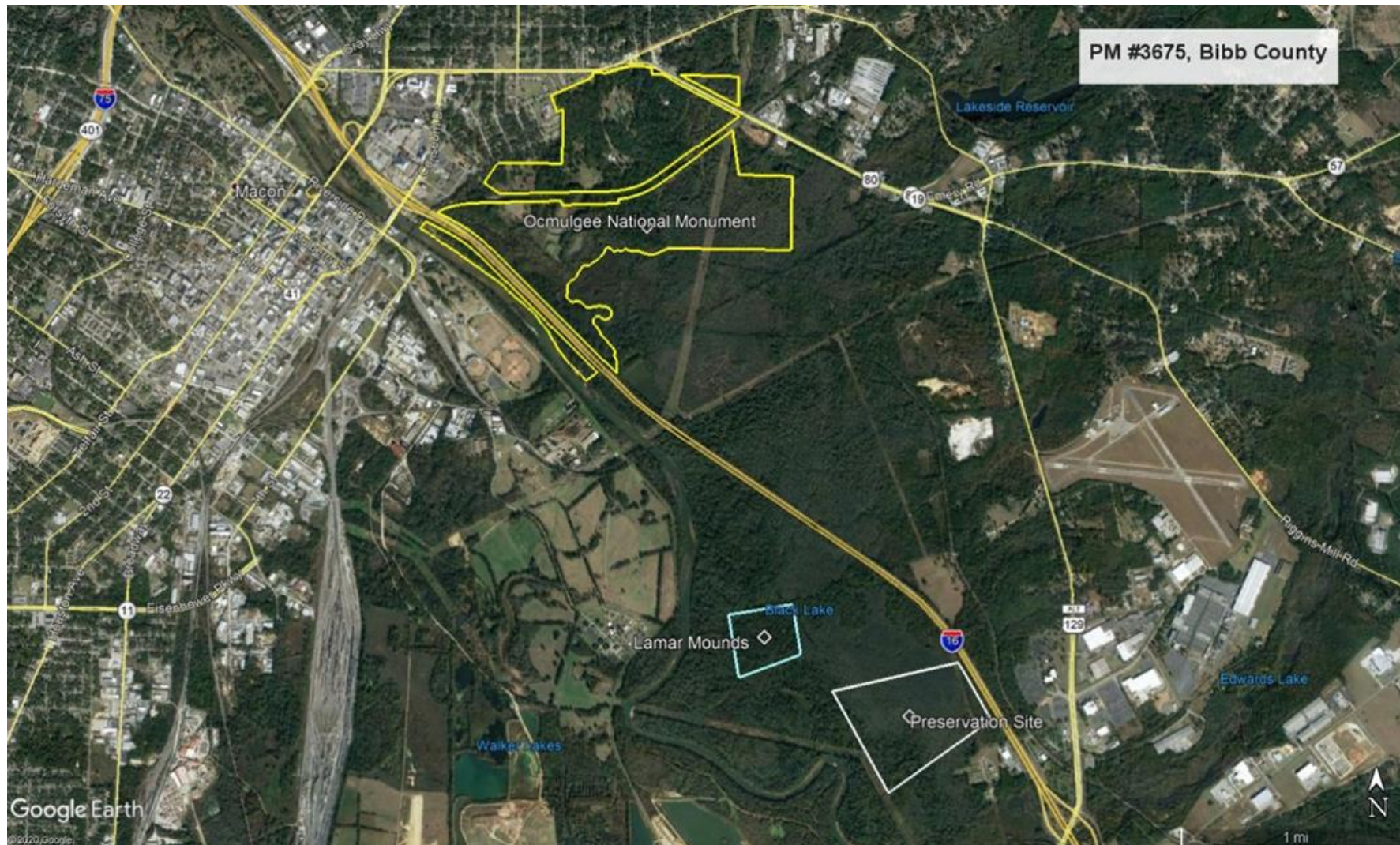
Georgia DOT Property - 136.55 Acres



Georgia DOT Property - 136.55 Acres



Property Donation to the National Park Service (Ocmulgee Mounds National Historical Park – Macon, GA)



Property Donation to the National Park Service (Ocmulgee Mounds National Historical Park – Macon, GA)



Property Donation to the National Park Service (Ocmulgee Mounds National Historical Park – Macon, GA)



United States Department of the Interior

National Park Service
Ocmulgee National Monument
1207 Emery Highway
Macon, Georgia 31217-4399



February 17, 2012

Phil Copeland, Administrator
Office of Right of Way
Georgia Department of Transportation
One Georgia Center
600 W Peachtree NW
Atlanta, GA 30308

Dear Mr. Copeland:

I write to notify you that the National Park Service (NPS) is beginning a boundary study for Ocmulgee National Monument. Because you are a landowner in the vicinity of the monument, I wanted to make you aware of the study and explain why we are undertaking this project.

A principal purpose of the study is to make it possible for the NPS to accept the proposed donation of certain lands south of Ocmulgee National Monument. A non-profit organization has acquired approximately 250 acres of land contiguous to the existing monument boundary and has expressed a desire to donate this property to the NPS. However, the NPS cannot accept the donation until Congress enacts legislation formally expanding the monument boundary. For its part, Congress will not expand the boundary until a study has been completed showing that the lands in question meet established criteria for inclusion in the National Park System. Thus, a boundary study is a necessary first step before NPS can consider the proposed donation from the Archeological Conservancy.

Another purpose of the study is to determine whether there exist other properties in the vicinity of the monument that would be appropriate for inclusion in an expanded boundary. The area generally south-southwest of the monument has been identified as a Traditional Cultural Property (TCP) of the Muscogee (Creek) Nation. Portions of the TCP lie in areas that Congress appears to have originally envisioned for protection when it authorized Ocmulgee National Monument in 1934. It is possible, therefore, that some of these areas qualify for addition to the monument. To make a determination one way or the other, we propose to include select tracts from the TCP in the boundary study. We are also interested in including tracts of undeveloped land along the monument boundary. However, we will only consider properties whose owners have expressed a willingness to have them included in the study. We want the boundary study to be a cooperative effort among NPS, landowners, other governmental entities, and the public.

The following points bear emphasis:

- Only Congress can change the boundary of Ocmulgee National Monument;
- Even if Congress changes the boundary, the NPS cannot acquire property unless and until Congress appropriates the necessary funds.
- The intent of this planning effort is that NPS will only acquire property from willing sellers.

A review of publicly available information indicates that you are the owner or agent of one of the tracts we would like to include in the study. Specifically parcel # U090-0066 located at 4467 Confederate Way Road. With your approval we would appreciate the opportunity to visit your property as part of the study. Being able to enter and view properties adjacent to the monument would assist us greatly in identifying a potential new boundary. If you are willing to let us view your property, please let me know at your earliest convenience so that we can make detailed arrangements with you.

Thank you for your consideration of our request. We believe that your participation in this process will result in a better boundary study for Ocmulgee National Monument. Finally, your participation in this study does not in any way obligate you to proceed further in our boundary adjustment process.

If you have any questions, you may reach me at 478-752-8257, ext. 211.

Sincerely,

Jim David
Superintendent

cc: Mark Kinzer, NPS SER

Property Donation to the National Park Service (Ocmulgee Mounds National Historical Park – Macon, GA)



July 26, 2023

Mr. John C. Danner, Chief
National Park Service
Land Resources Program Center
100 Alabama Street SW
Atlanta, Georgia 30303

Re: Georgia Department of Transportation's Letter of Intent for the Donation of Real Property

Dear Mr. Danner:

The purpose of this correspondence (Letter of Intent) is to document Georgia Department of Transportation's (DOT) intention to donate real property to the National Park Service (NPS)/United States of America (USA). This parcel contains approximately 136.55 acres (see accompanying attachments) recorded on September 23, 1998, with the Superior Court of Bibb County, Georgia, in Book 4265, Page 339, and being more particularly described as follows:

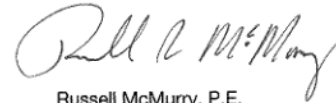
BEGINNING at the point of intersection of the existing southwestern right of way line of the Frontage Road of I-16 with the condemnee's southeastern property line, running thence S55-25-44W along said southeastern property line a combined distance of 2,902.32 feet to a point of the property line between the lands of the condemnee and the lands now or formerly owned by Oglethorpe Electric Membership Corporation, thence N29-31-11W a distance of 2,636.29 feet to a point, thence N77-31-46E a distance of 2,989.44 feet to a point on the existing southwestern right of way line of the Frontage Road of I-16; thence southeasterly along said existing right of way line of the Frontage Road of I-16 a distance of 1,604.62 feet back to the point of BEGINNING. Said described land being for the construction of a Mitigation Area for the replacement of wetlands as required by Section 404 of the Federal Clean Water Act of 1977 amended 1978 and is shown colored yellow on the attached plats marked Annex 1-A.

Georgia DOT understands that the proposed conveyance of this property to the NPS/USA will be a donation without compensation and that this property will be managed by the NPS/USA as a part of the Ocmulgee Mounds National Monument. The Georgia DOT further understands that NPS/USA can only acquire the property after all prerequisites for federal land acquisition have been satisfied, including the procurement of a title report and approval of an Environmental Site Assessment (Phase 1; Phase 2 when necessary). As such, the Georgia DOT will allow the NPS/USA, upon request, to inspect Georgia DOT records regarding this transaction and will grant permission to the NPS/USA, its employees, and contractors to enter upon and inspect the tract for due diligence purposes, with the understanding that the NPS/USA will contact the Georgia DOT in advance of any such inspections in order to afford the Georgia DOT the opportunity to be present.

Russell R. McMurry, P.E., Commissioner
One Georgia Center
600 West Peachtree NW
Atlanta, GA 30308
(404) 631-1990 Main Office

The Georgia DOT looks forward to working with you on this important project and would like to express our sincere appreciation for your assistance in this donation that will benefit members of the public and tribal partners. In the near future Georgia DOT will schedule a meeting to discuss our agencies respective delivery schedules, to include a tribal meeting, pertaining to the culmination of the donation. Again, thank you for your partnership in this endeavor. Should you have further questions or comments on the Letter of Intent, please contact Georgia DOT's State Environmental Administrator, Mr. Eric Duff, at 404-556-2133 eduff@dot.ga.gov.

Sincerely,



Russell McMurry, P.E.
Commissioner

HP/EAD

cc: Robert L. Brown, State Transportation Board, Chair
Cathy Williams, State Transportation Board, Congressional District 2
Meg Pirkle, P.E., Georgia DOT, Chief Engineer
Hiral Patel, P.E., Georgia DOT, Director of Engineering
Matthew Cline, Georgia DOT, General Counsel

Property Donation to the National Park Service (Ocmulgee Mounds National Historical Park – Macon, GA)

Type: GEORGIA LAND RECORDS
Recorded: 4/1/2025 4:46:00 PM
Fee Amt: \$25.00 Page 1 of 6
Bibb County Superior Court
Erica Woodford Clerk
BK 12108 PG 24 - 29

RETURN TO:
Kensington Vanguard National Land Services
2300 Lakeview Pkwy Suite 700
Alpharetta GA 30009

**GEORGIA DEPARTMENT OF TRANSPORTATION
QUITCLAIM DEED**

STATE OF GEORGIA
COUNTY OF FULTON

PM 3675
OCMU Tract 01-147

THIS INDENTURE made this 6th day of December, 2024, between the GEORGIA DEPARTMENT OF TRANSPORTATION, an agency of the State of Georgia (herein called "Grantor") and the UNITED STATES OF AMERICA, and its assigns, whose address is National Park Service, Interior Region 2 South Atlantic-Gulf, Land Resources Program Center, 100 Alabama Street, SW, 1924 Building, Atlanta, Georgia 30303 (herein called "Grantee").

WITNESSETH: that the Grantor for and in consideration of the sum of ONE DOLLAR (\$1.00) AND OTHER GOOD AND VALUABLE CONSIDERATION, cash in hand paid, the receipt of which is hereby acknowledged, has bargained, sold, and does by these presents bargain, sell, remise, release, and forever Quitclaim to Grantee all the right, title, interest, claim or demand which Grantor has or may have had to all that parcel of land described in Exhibit "A", attached hereto and made a part hereof.

The acquiring federal agency is the U.S. Department of the Interior, National Park Service. THIS CONVEYANCE IS MADE PURSUANT TO 23 CFR § 710.409 (b) and (d) for continued Public Ownership and Use, specifically for inclusion into the Ocmulgee Mounds National Historic Park for perpetual public use and enjoyment. Therefore, GRANTOR hereby retains a reversionary right to the above described property. Should the property fail to be publicly owned and maintain the specified public use, or use for a public transportation related purpose, ownership of the property shall revert to the Grantor at no cost to the Grantor, free and clear of any and all liens or encumbrances. Grantee further agrees that upon acceptance and recording of this deed to maintain the above described property for public purposes.

THIS CONVEYANCE IS MADE SUBJECT TO any existing easement of record for public roads and highways, public utilities, railroads and pipelines, canals, and ditches.

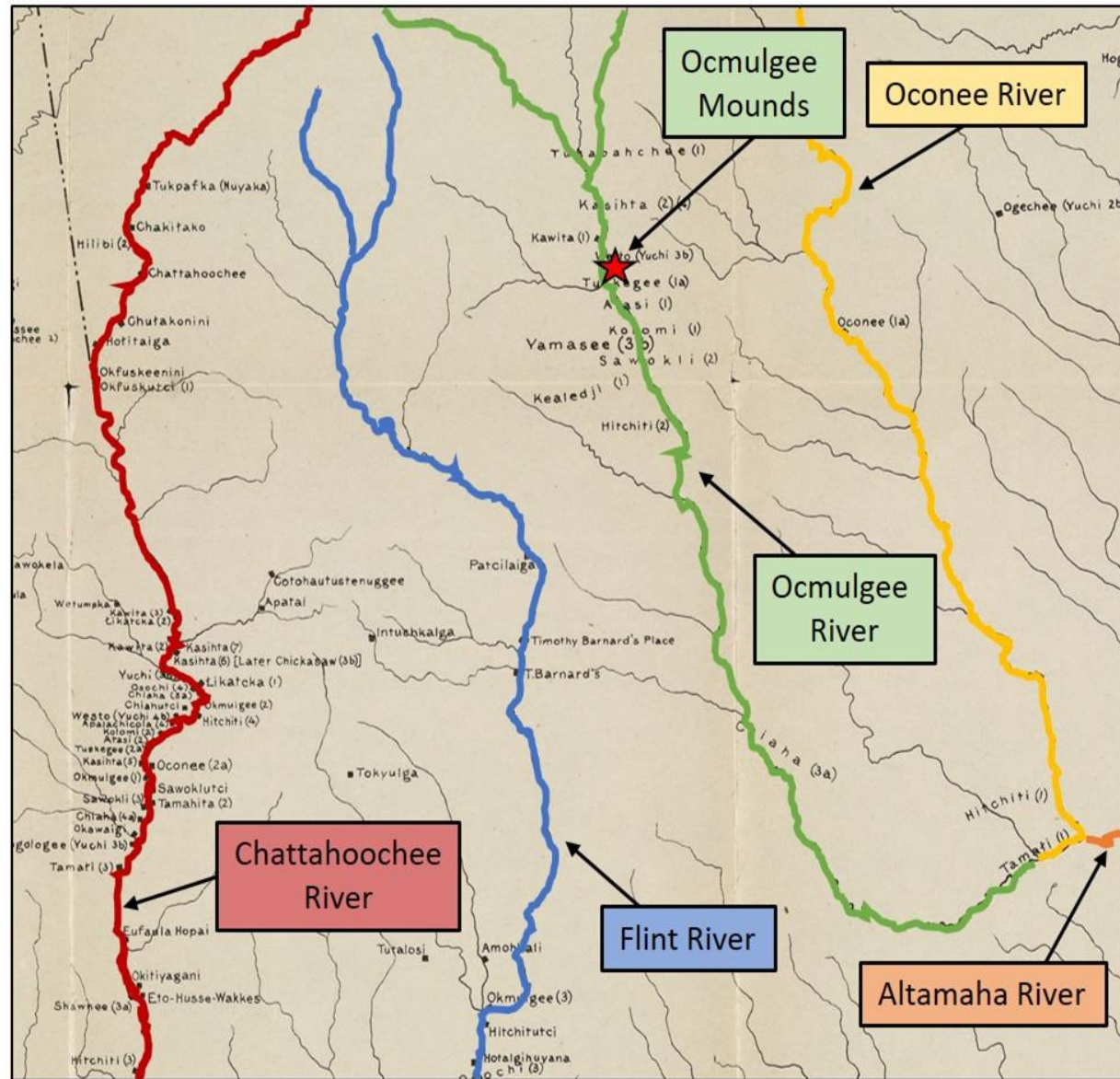


Ocmulgee National Park and Preserve Initiative

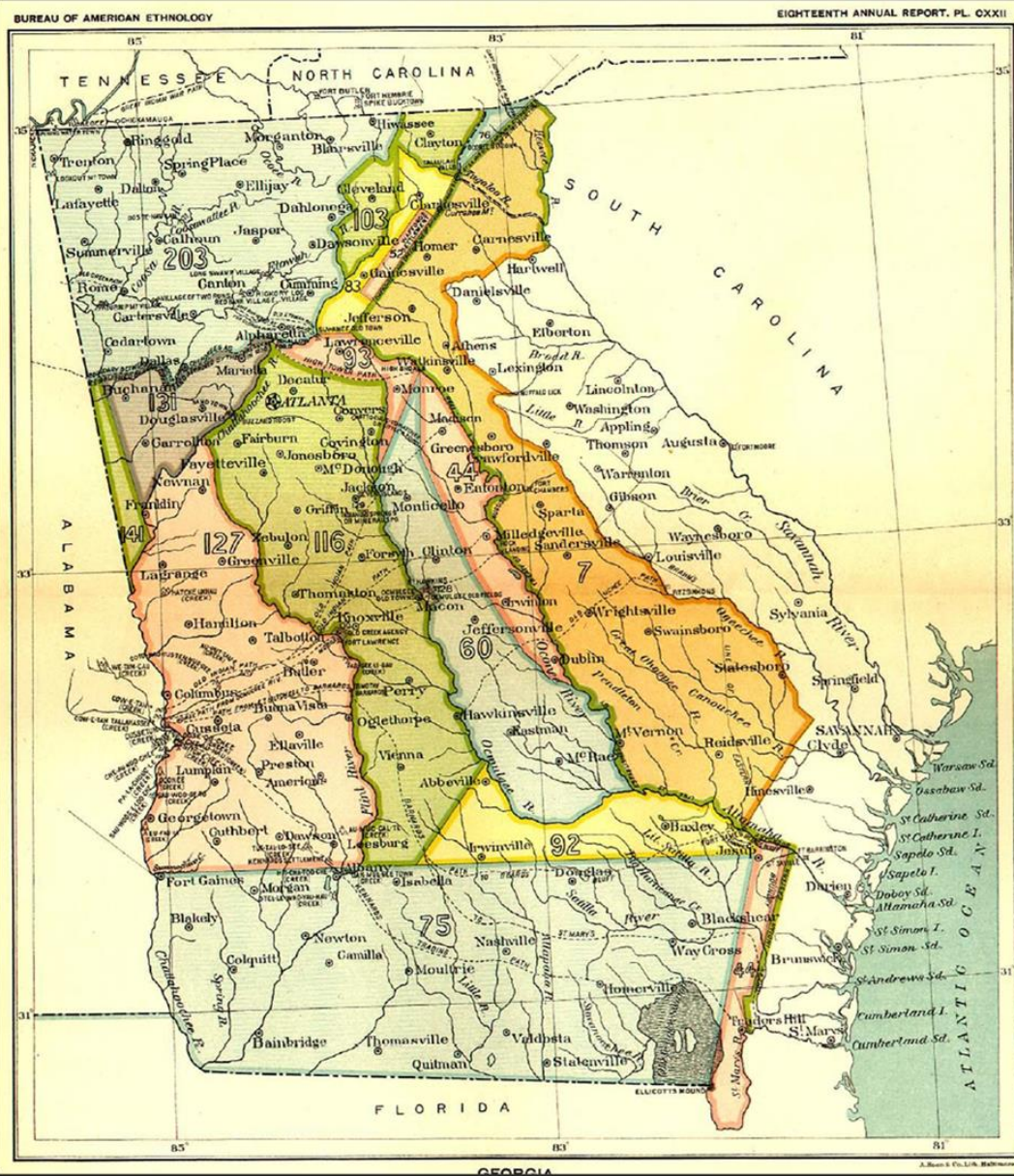


Removal Happened in Various Phases

MCN Homelands in Western and Central Georgia



- Lower Creek Homelands
- Over 60 Tribal Towns in this region
- Chattahoochee River, Flint River, Ocmulgee River
- Oconee River, Altamaha River, Ogeechee River, Savannah (Yamasee) River, and the Georgia Coast, are also important in Muskogean history.



Muscogee (Creek) Nation Treaties

No.	Year	Treaty Name	Sovereign	Sovereign
1	1733	Treaty of Savannah	English	Lower Creek Nation
2	1739	Treaty of Coweta	English	Lower Creek Nation
3	1757	Treaty of Savannah	English	Upper and Lower Creek Nation
4	1763	Treaty of Augusta	English	Upper and Lower Creeks
5	1773	Treaty of Augusta	English	Upper and Lower Creeks
6	1783	Treaty of Augusta *	Georgia	Lower Creeks
7	1784	Treaty of Pensacola	Spain	Talapuche Indians
8	1785	Treaty of Galphinton *	Georgia	Creek Nation
9	1786	Treaty of Shoulderbone Creek *	Georgia	Creek Nation
10	1790	Treaty of New York	U.S.	Creek Nation of Indians
11	1796	Treaty of Colerain	U.S.	Creek Nation of Indians
12	1802	Treaty of Fort Wilkinson	U.S.	Creek Nation of Indians
13	1805	Treaty of Washington	U.S.	Creek Nation of Indians
14	1814	Treaty of Fort Jackson	U.S.	Creek Nation
15	1818	Treaty at Creek Agency	U.S.	Creek Nation of Indians
16	1821	Treaty of Indian Springs	U.S.	Creek Nation
17	1825	Treaty of Indian Springs *	U.S.	Creek Nation
18	1826	Treaty of Washington	U.S.	Creek Nation of Indians
19	1827	Treaty of Fort Mitchell	U.S.	Creek Nation
20	1832	Treaty of Cusseta	U.S.	Creek Indian Tribe
21	1833	Treaty of Ft. Gibson	U.S.	Muscogee or Creek Nation
22	1835	Treaty with Comanche	U.S.	Muscogees
23	1838	Treaty of Ft. Gibson	U.S.	Creek Nation
24	1845	Treaty with the Creeks and Seminole	U.S.	Creek Tribe of Indians
25	1854	Treaty with the Creeks	U.S.	Creek Tribe of Indians
26	1856	Treaty with the Creeks	U.S.	Creek Tribe of Indians
27	1861	Treaty of Friendship and Alliance with the Creek Nation of Indians	C.S.A.	Creek Nation
28	1866	Reconstruction Treaty	U.S.	Creek Nation of Indians
		* Revoked Treaties		

Largest Archeological Dig In American History



116th Congress

An Act

To provide for the management of the natural resources of the United States,
and for other purposes.

*Be it enacted by the Senate and House of Representatives of
the United States of America in Congress assembled,*

SECTION 1. SHORT TITLE; TABLE OF CONTENTS.

(a) **SHORT TITLE.**—This Act may be cited as the “John D. Dingell, Jr. Conservation, Management, and Recreation Act”.

Special Resource Study for Ocmulgee National Park and Preserve

“The study required under paragraph shall be conducted in accordance with section 100507 of title 54, United States Code.

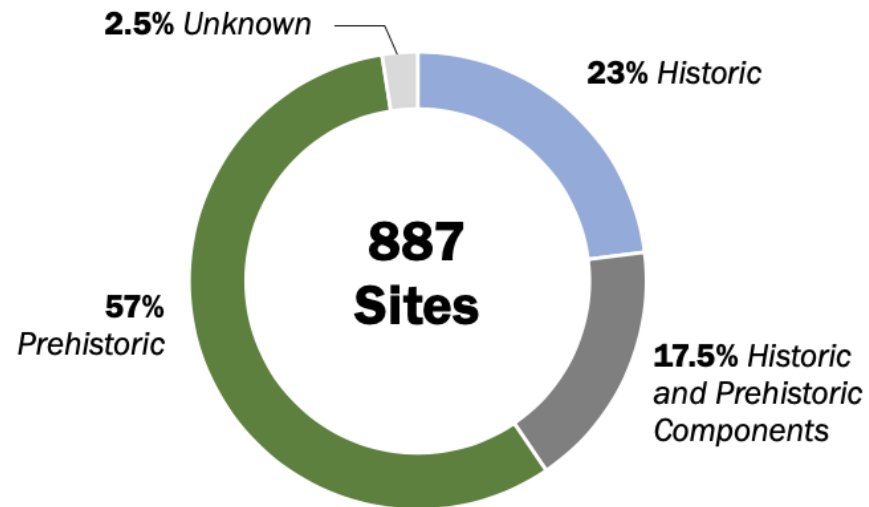
REPORT.—Not later than 3 years after the date on which funds are first made available to carry out the study under paragraph the Secretary shall submit to the Committee on Natural Resources of the House of Representatives and the Committee on Energy and Natural Resources of the Senate a report that describes the results of the study; and any conclusions and recommendations of the Secretary [of Interior].”



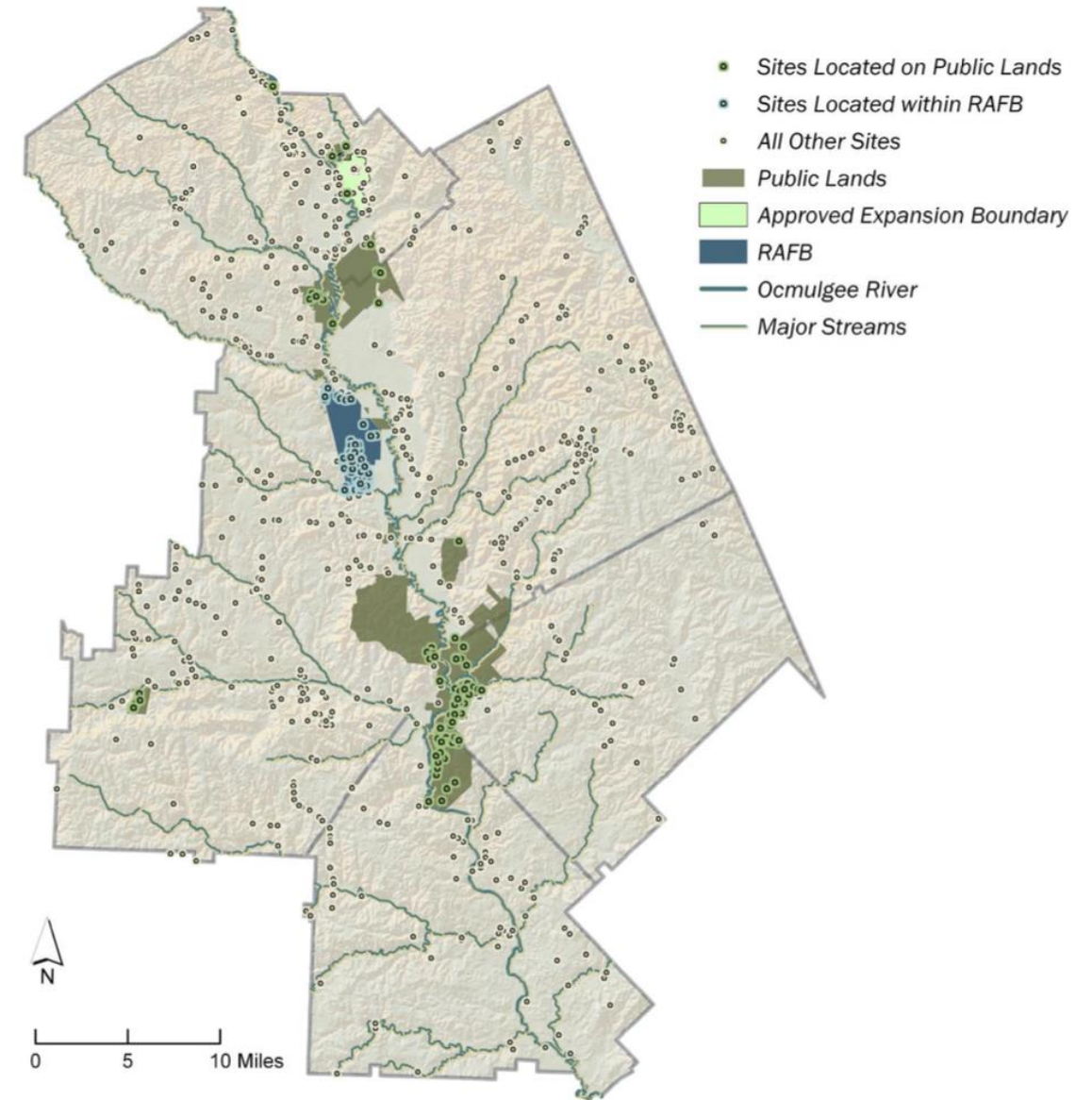
NPS Special Resource Study Criteria:

- 1) National significance
- 2) Suitability
- 3) Feasibility
- 4) Need for NPS Management

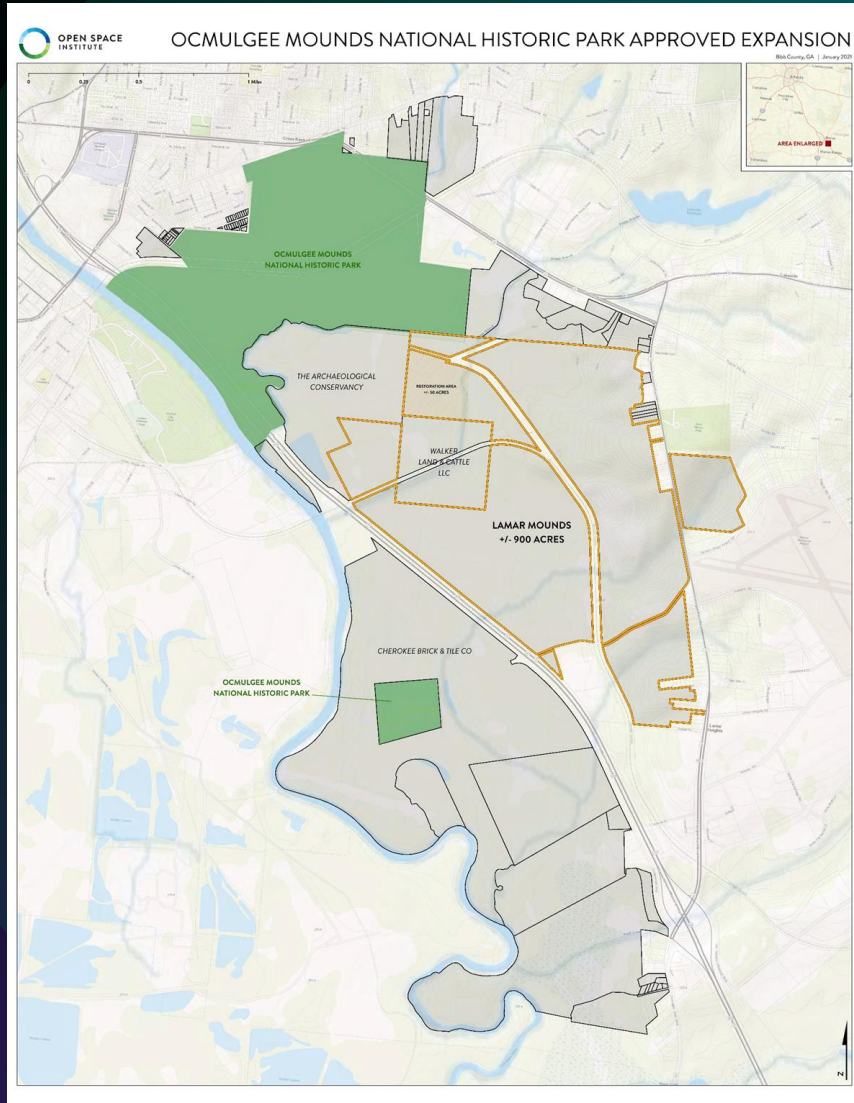
Cultural Sites of the Ocmulgee Corridor



Mercer University study entitled, "Building the Case for National Significance".



Because of partnerships, the Ocmulgee Mounds National Historical Park has more than doubled in size.



Tribal / Non-Tribal Partnership



Diamond in the Rough Report: The Economic Benefits

Key Findings			
Year 15 Projections (2016–2031)	Most Likely Growth Scenario with an Ocmulgee National Park & Preserve*	No Ocmulgee National Park & Preserve Scenario**	The Difference = Projected Annual Economic Gains from an Ocmulgee National Park & Preserve
Annual Visitation	1,374,653	207,607	+ 1,167,046
Total Annual Economic Activity	\$233.4 million	\$26.7 million	+ \$206.7 million
Annual Labor Income	\$86.7 million	\$10.2 million	+ \$76.5 million
Annual Tax Revenue	\$33.5 million	\$3.7 million	+ \$29.8 million
Annual Jobs Supported	3,171	357	+ 2,814

* The National Park & Preserve concept would unite and link the Ocmulgee National Monument, Bond Swamp National Wildlife Refuge, and the Oaky Woods, Ocmulgee, and Echeconnee Creek State Wildlife Management Areas.
 ** Under a No Park & Preserve scenario, the existing public lands would continue to operate separately.



**KNIGHT
FOUNDATION**

Fund at Community Foundation of Central Georgia



H.R. 2345 + S. 1131

Cosponsors: H.R.2345 — 119th Congress (2025-2026)

[All Information](#) (Except Text)

Sponsor: [Rep. Scott, Austin \[R-GA-8\]](#) | Cosponsor statistics: 12 current - includes 12 original

Hide Filters



* = Original cosponsor

View

Expanded



Sort by

First to Last



Party of Cosponsor



[Check all](#)

☐ Republican

[7]

☐ Democratic

[5]

Cosponsors by U.S. State or Territory



[Georgia](#)

[12]

Cosponsor

Date Cosponsored

[Rep. Bishop, Sanford D. \[D-GA-2\]*](#)

03/25/2025

[Rep. Carter, Earl L. "Buddy" \[R-GA-1\]*](#)

03/25/2025

[Rep. McBath, Lucy \[D-GA-6\]*](#)

03/25/2025

[Rep. McCormick, Richard \[R-GA-7\]*](#)

03/25/2025

[Rep. Scott, David \[D-GA-13\]*](#)

03/25/2025

[Rep. Williams, Nikema \[D-GA-5\]*](#)

03/25/2025

[Rep. Allen, Rick W. \[R-GA-12\]*](#)

03/25/2025

[Rep. Loudermilk, Barry \[R-GA-11\]*](#)

03/25/2025

[Rep. Jack, Brian \[R-GA-3\]*](#)

03/25/2025

[Rep. Johnson, Henry C. "Hank" \[D-GA-4\]*](#)

03/25/2025

[Rep. Greene, Marjorie Taylor \[R-GA-14\]*](#)

03/25/2025

[Rep. Collins, Mike \[R-GA-10\]*](#)

03/25/2025

PUBLIC / PRIVATE PARTNERS

- Muscogee (Creek) Nation
 - National Park Service
 - Department of Interior
- U.S. Fish and Wildlife Service
- Georgia Department of Natural Resources
 - National Park Foundation
 - Open Space Institute
- Georgia Mining Association
 - Trust for Public Land
- National Park Conservation Association
 - Georgia Conservancy
 - The Nature Conservancy, Georgia
- Middle Georgia Regional Commission

- Green South Foundation
 - Knight Foundation
 - Rivian Foundation
- The Conservation Fund
- Peyton Anderson Foundation
 - Department of Defense
 - 21st Century Partnership
 - Visit Macon
- Macon Bibb Industrial Authority
 - Macon-Bibb County
- Macon-Bibb Urban Development Authority
 - Newtown Macon
 - Mercer University
- Georgia Wildlife Federation



Thank you

Questions?



STATE TRANSPORTATION BOARD

JULY 2025 COMMITTEE MEETINGS

July 16, 2025